

Analysis of the LET Performance of Centers of Excellence and Centers of Development for Teacher Education: Implications to Policy, Practice and Research

Maria Agnes P. Ladia, Ed.D.

Abstract— This study analyzed the performance of the COEs and CODs in the Licensure Examination for Teachers (LET) from 2010 to 2012. The sample in the LET-elementary level consisted of 23,066 examinees while that in the LET-secondary level comprised 26,432 takers. Data on the LET performance were obtained from the Professional Regulation Commission. Findings showed that 71 percent of the first-timers passed the LET-elementary while only 23 percent of the repeaters passed; the overall passing percentage was 47 percent and 18 institutions had lower than 50 percent overall passing percentage. In the LET-secondary, 78 percent of the first-timers and 22 percent of the repeaters passed; the overall passing percentage was 53 percent and 15 institutions obtained lower than 50 percent overall passing percentage. On the whole, the COEs/CODs performed better than the other teacher education institutions in the country. Results also revealed that COEs, private HEIs, first-timers and COEs/CODs in Luzon had significantly better performance than the CODs, SUCs, repeaters and COEs/CODs in Visayas and Mindanao, respectively. Moreover, the poor performance of the repeaters pulled down the COEs/CODs' overall passing percentage. Implications of the results to TSU-College of Education's goal to become a COE, as well as to policy, practice and research are discussed.

Index Terms— centers of excellence; centers of development; licensure examination for teachers; first-timers; repeaters

I. INTRODUCTION

Licensed teachers have been found to effect higher student achievement than teachers who are not certified [1]. Cognizant of the significant role of competent teachers in improving the performance of students in basic education, the Commission on Higher Education (CHED) identifies teacher education as one of the program areas needed for the development of world-class scholarship, nation building and national development. CHED has identified Centers of Excellence (COEs) and Centers of Development (CODs) for teacher education in order to strengthen and further improve the quality of teacher preparation in the Philippines [2].

“Center of Excellence refers to a teacher education program in a higher education institution (HEI), which continuously demonstrates excellent performance in the areas of instruction, research and publication, extension and linkages, institutional qualifications and provides excellent quality pre-service teacher education program to meet the needs of progressive teachers for elementary, secondary and special education programs.” On the other hand, “Center of Development refers to a teacher education program in an HEI, which demonstrates the potential to become a COE in the future.” The identified COEs and CODs are expected to serve as catalyst in attaining and fulfilling the program's mission of producing professionally competent and morally upright teacher education graduates [2].

To qualify for the selection of COE/COD, the teacher education program should have passed the initial screening. One of the requirements in the initial screening for COE includes being top 10 per category of high performing TEIs – average performance in the Licensure Examination for Teachers (LET) for the last three years. On the other hand, an institution applying to become COD must belong to the top 11-20 per category of high performing TEIs [2].

Recently, CHED released an updated list COEs and CODs as of September 20, 2012 with validity period until May 31, 2014. This list includes 31 COEs and 12 CODs for teacher education [3]. These COEs/CODs are expected to stimulate and expedite the development of world-class and responsive teacher education programs.

The COEs/CODs are selected primarily based on quality instruction. Hellstorm [4] in his study suggest that the COE instrument may be a fruitful path towards realizing capacity for human resource development, organizational capacity and the creation of an institutional and legal framework in the research and higher education field. Moreover, Kettunen (2010) One of the indicators of excellent teaching is the graduates' performance in licensure examinations. In an examination of the performance of the 31 COEs and 9 CODs in the 2010 LET elementary level, Nool et. al [4] found out that only 40 percent of the examinees passed the LET and 15 COEs/CODs had at least 50 percent passing percentage. To further analyze the extent to which the COEs and CODs have produced certified teachers, this study was conducted to include their performance in the secondary level for a period of three years.

II. OBJECTIVES

This study aimed to examine the LET performance of the Centers of Excellence and Centers of Development for teacher education in elementary and secondary levels from 2010 to 2012.

Specifically, this study intended to:

1. Analyze the LET performance of the COEs/CODs by type of examinees along:
 - 1.1 LET-elementary level
 - 1.2 LET-secondary level
2. Compare the LET performance of the institutions when grouped according to:

- 2.1 Designation: COEs and CODs
 - 2.2 Type of Institution: SUCs and Private HEIs
 - 2.3 Examination Level: Elementary and Secondary
 - 2.4 Type of Takers: First-timers and Repeaters
 - 2.5 Location: Luzon, Visayas and Mindanao
3. Determine the implications of findings to TSU-College of Education's goal to become a COE

III. METHODOLOGY

This study is a documentary analysis on the LET performance of 31 COEs and 11 CODs. *LET performance* is operationally defined as the percentage of examinees in a COE/COD that passed in the LET elementary and secondary levels from 2010 to 2012. Of these 42 COEs/CODs, 28 are private HEIs and 14 are SUCs; 25 are located in Luzon, 7 in Visayas and 10 in Mindanao. The list of COEs and CODs as of September 20, 2012 is shown in Appendix A.

The sample in the LET-elementary level involved 15,115 examinees from the COEs and 7,951 from the CODs, while the sample in the LET-secondary level comprised 19,259 examinees from the COEs and 7,173 from the CODs. Examinees are classified as first-timers or repeaters. First-timers are those who took the LET for the first time and might have graduated during the current year or previous years while repeaters are those who had taken the LET more than once.

The data on the LET performance of the 42 COEs/CODs were obtained from the *LET Performance of Schools in 2010 (April and September), 2011 (April and September) and 2012 (March and September)* released by the Professional Regulation Commission (PRC) in its official website [8], [9], [10], [11], [12], [13]. Descriptive statistics such as frequency count, percent and rank were used to analyze and summarize the data. Z-ratio was computed to determine if there exists a significant difference between two independent proportions [14]. All data were encoded and analyzed using Microsoft Excel.

IV. RESULTS AND DISCUSSION

1. LET-Performance of the COEs/CODs

1.1 LET-Elementary level

The combined performance of the COEs and CODs in the LET-Elementary level from 2010 to 2012 is shown in Table 1. The annual number of takers and passers, and percentage of passers are presented in Appendices B and C, respectively.

First-timers' Performance. University of Santo Tomas (UST) had the highest passing percentage (97.31%), followed by De La Salle University-Manila (DLSU-M, 97.18%), Philippine Normal University-Manila (PNU-M, 92.30%), Saint Mary's University (SMU, 91.55%) and Universidad de Santa Isabel (UDSI, 88.24%). These top performing institutions are all COEs. The top three are from the National Capital Region (NCR) and only PNU-M is a state university.

On the other hand, the lowest performing institutions are St. Paul University-Tuguegarao (SPU-T, 42.59%), Western Mindanao State University-Davao (WMSU-D, 47.80%), and University of Luzon (UL, 48.89%). Only these three institutions had a performance which was lower than the national passing percentage of 51.17%. Among these institutions, one is a COE while one is a public university.

Repeaters' Performance. The institutions with at least 50% passing percentage are DLSU-M (100%), Ateneo De Davao University (ADDU, 75.00%), West Visayas State University-Iloilo (WVSU-I, 61.59%), Saint Louis University (SLU, 56.00%) and UST (50.00%). Of these institutions, only ADDU is a COD while only WVSU-I is a state university.

It is surprising to note that the four lowest performing institutions among the 42 HEIs, namely: UL (8.54%), Father Saturnino Urios University-Butuan (FSUU-B, 12.18%), University of Mindanao-Davao (UM-D, 12.76%) and Capitol University-CDO (CU-CDO, 14.10%) are COEs and private institutions. The other 33 institutions had passing percentage ranging from 14.32% (Manuel S. Enverga University Foundation-Lucena [MSEUF-L]) to 47.06% (PNU-M).

These results on the performance of first-timers and repeaters indicate that the top performing and lowest performing institutions may be a COE or COD, public or private. However, UST and DLSU-M, which are both COEs and private universities, consistently top the list of high performing institutions in terms first-timers' and repeaters' LET performance.

Overall Performance. The five top performing institutions are: DLSU-M (97.22%), UST (95.18%), ADDU (85.71%), PNU-M (84.05%) and WVSU-I (82.31%). Of these institutions, only ADDU is a COD while PNU-M and WVSU-I are public universities.

On the other hand, the lowest performing institutions whose performance is lower than the national passing percentage of 28.75% are: UL (21.11%), SPU-T (22.67%) and MSEUF-L (25.79%). There are other 15 institutions, 11 COEs (35% of the COEs) and 4 CODs (36% of the CODs), whose passing percentage is less than 50%. While the top two performing institutions are COEs and private universities, the three lowest performing ones are also private and one is a COE.

As a whole, the COEs/CODs had significantly higher performance (46.51%) than the national passing percentage of 28.75% ($z = 55.97, p < .05$, two-tailed).

Impact of repeaters' performance on the LET-elementary overall performance. Except for De La Salle University-Manila, all of the COEs and CODs had lower performance among the repeaters compared to the first-timers. The overall performance is lower than the first-timers' performance, ranging from 1.79% (in ADDU) to 47.84% (in FSUU-B).

The 12 lowest performing institutions (overall rank 31 to 42) had more repeaters than first-timers. Since the repeaters' performance is lower than that of the first-timers, the overall performance of the COEs/CODs is pulled down by the poor performance of the repeaters.

2. Comparative Performance of the COEs/CODs

2.1 LET-Secondary level

Table 2 shows the combined performance of the COEs and CODs in the LET-Secondary level from 2010 to 2012. The number of takers and passers, and percentage of passers per year are presented in Appendix D and E, respectively.

First-timers' Performance. De La Salle University-Manila obtained the highest passing percentage (99.35%), followed by PNU-M (92.54%), ADDU (91.94%), UST (90.60%) and Xavier University (XU, 89.53%). Of these five institutions, two are CODs while three are located in the NCR. Except for PNU-M, all of them are private institutions.

On the other hand, the lowest performing institutions are WMSU-D (46.95%), UL (50.39%) and Central Bicol State University of Agriculture-Pili (CBSUA-P, 52.99%). These institutions' performance was lower than the national passing percentage of 53.01%. Among them, one is a COE while one is a private institution.

Repeaters' Performance. The three institutions with at least 50% passing percentage are DLSU-M (83.33%), XU (59.52%) and UST (53.62%). Of these institutions, only XU is a COD and all are private universities. The other 39 institutions had passing percentage ranging from 0% (ADDU) to 44.19% (PNU-M).

Overall Performance. The five highest performing institutions are: DLSU-M (98.74%), UST (87.20%), PNU-M (86.76%), ADDU (83.82%) and XU (82.86%). Of these institutions, ADDU and XU are CODs while only PNU-M is a state university.

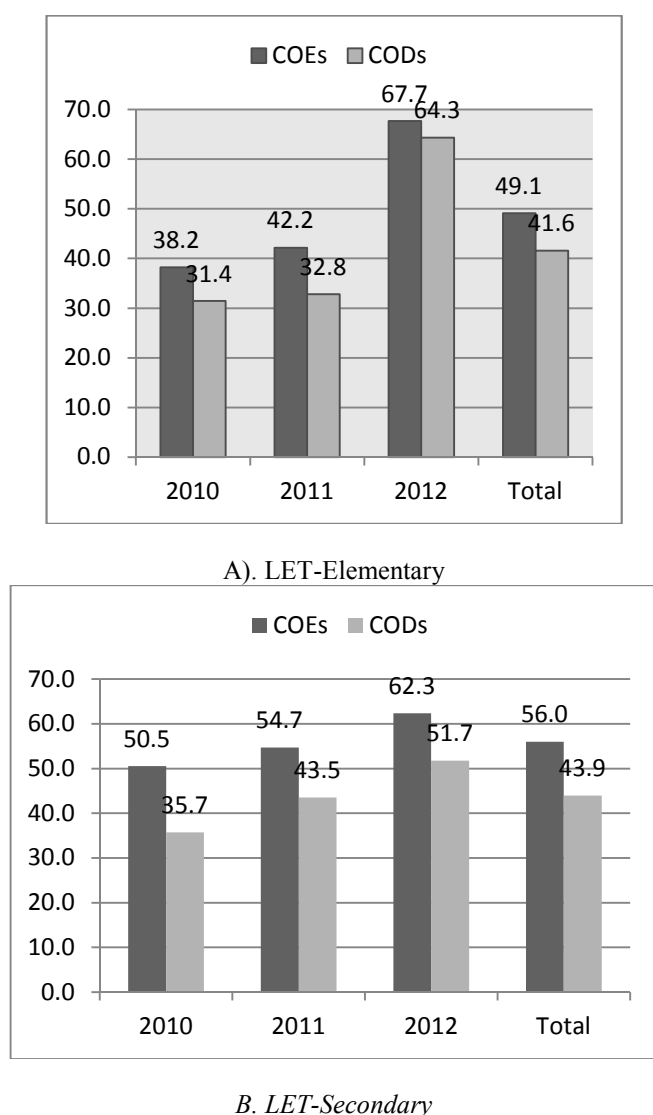


Fig. 1. LET Performance of COEs and CODs

With regard to LET-Secondary level as shown in Figure 1(b), the COEs had a performance of at least 50% in the three-year period, while the CODs obtained at least 50% passing percentage only in 2012. The COEs' performance was consistently higher than the CODs by 14.8%, 11.1%, 10.6% and 12.1% in 2010, 2011, 2012 and total, respectively. There was a significant difference in the passing percentage between COEs and CODs ($z = 12.01, z = 9.33, z = 9.23$ and $z = 17.47$ in 2010, 2011, 2012 and total, respectively, $p < .05$, two-tailed).

2.2 Type: SUCs and Private HEIs

The LET performance of the 14 SUCs and 28 private HEIs in the elementary and secondary level is displayed in Figure 2(a) and 2(b). In the LET-elementary level, the private HEIs had higher performance than the SUCs from 2010 to 2012. The private HEIs' performance was slightly higher than the SUCs by about 6.5%, 1.6%, 0.8% and 3.8% in 2010, 2011, 2012 and total, respectively. Only in 2012 that both SUCs and private institutions had at least 50% passing percentage. The difference in the passing

percentage between SUC and private HEIs was statistically significant in 2010 and total ($z = 5.24$ and $z = 5.20$, respectively, $p < .05$, two-tailed).

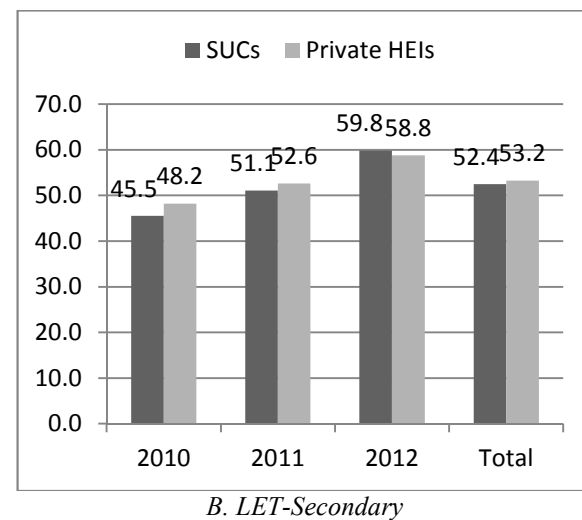
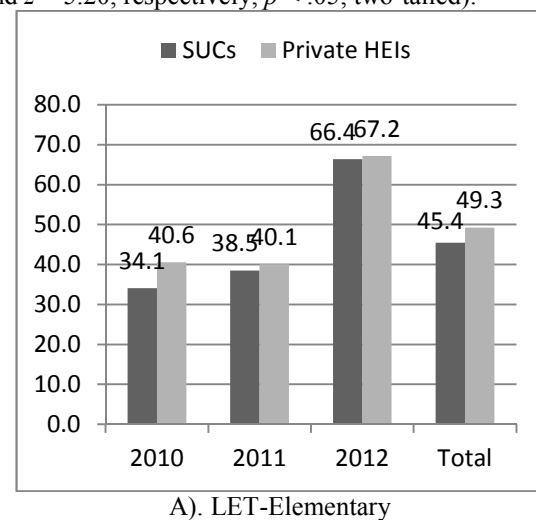


Fig. 2. LET Performance of SUCs and Private HEIs

In the LET-Secondary level as displayed in Figure 2(b), the SUCs and private HEIs had at least 50% passing percentage in 2011, 2012 and total. The SUCs' performance was slightly higher than the private HEIs by 1.1% in 2012. On the contrary, private HEIs had slightly higher performance than the SUCs by 2.7%, 1.6% and 0.8% in 2010, 2011 and total, respectively. There was a significant difference in the passing percentage between SUCs and private HEIs only in 2010 ($z = 2.37, p < .05$, two-tailed).

2.3 Examination Level: Elementary and Secondary

The LET performance of the 42 COEs/CODs in the elementary and secondary level is shown in Figure 3. The COEs/CODs had higher performance in secondary than elementary level in 2010, 2011 and total. At least 50% passing percentage was recorded in secondary level, except in 2010. On the other hand, it was only in 2012 that the passing percentage in the elementary level was higher than 50%.

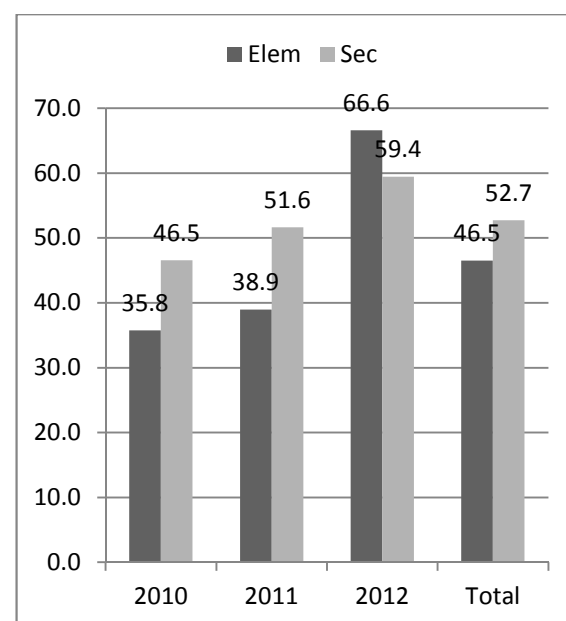


Fig.3. LET Performance of COEs/CODs in Elementary and Secondary Levels

The COEs/CODs' performance was higher in the secondary than elementary level by 10.8%, 12.7% and 6.2% in 2010, 2011 and total, respectively, but lower by 7.2% in 2012. The difference in the passing percentage between elementary and secondary levels was statistically significant ($z = 13.96, z = 16.52, z = 9.41$ and $z = 13.83$ in 2010, 2011, 2012 and total, respectively, $p < .05$, two-tailed).

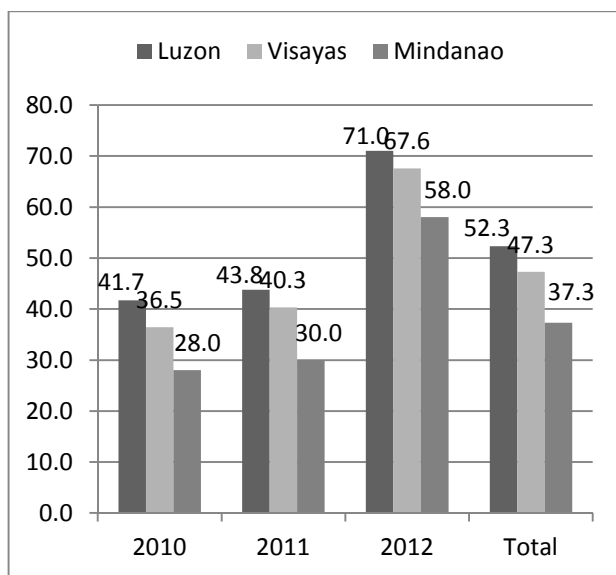
2.4 Type of Takers: First-takers and Repeaters

The LET performance of the first-timers and repeaters in the elementary and secondary level is displayed in Figure 4(a) and 4(b).

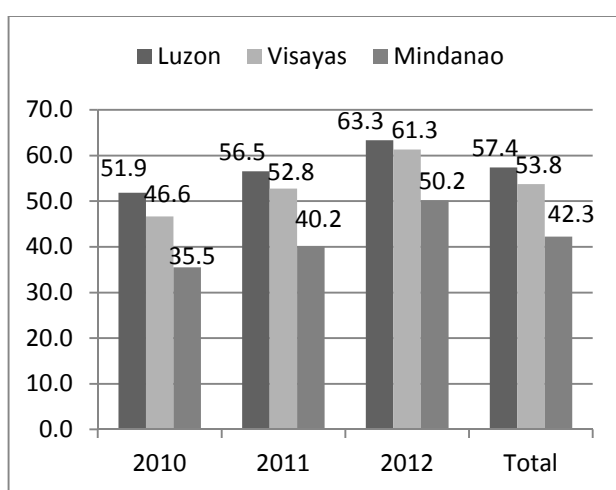
In the LET-elementary level, the first-timers had higher performance than the repeaters in 2010, 2011, 2012 and total. The first-timers' performance consistently increased from 2010 to 2012, ranging from 57.2% to 88.6%. The repeaters' performance, on the other hand, ranged from 14.3% in 2011 to 43.7% in 2012. There was a large difference between the first-timers' and repeaters' performance, namely: 42.3%, 52.8%, 44.9% and 47.4% in 2010, 2011, 2012 and total, respectively. The difference in the passing percentage between the first-timers and repeaters was statistically significant ($z = 39.13, z = 48.27, z = 40.41$ and $z = 72.11$ in 2010, 2011, 2012 and total, respectively, $p < .05$, two-tailed).

In the LET-Secondary level as shown in Figure 4(b), the first-timers had high performance of 66.8%, 72.5%, 79.4% and 73.2%, while the repeaters had low performance of 15.7%, 21.8%, 26.8% and 21.6% in 2010, 2011, 2012 and total, respectively. There was a very large difference between the first-timers' and repeaters' performance, namely: 51.1%, 50.7%, 52.6% and 51.6% in 2010, 2011, 2012 and total, respectively. The difference in the passing percentage between the repeaters and first-timers was statistically significant ($z = 45.85$, $z = 47.01$, $z = 49.83$ and $z = 82.19$ in 2010, 2011, 2012 and total, respectively, $p < .05$).

2.5 Location: Luzon, Visayas and Mindanao



A). LET-Elementary



B. LET-Secondary

Fig. 5. LET Performance of COEs/CODs in Luzon, Visayas and Mindanao

The LET performance of the COEs/CODs in the elementary and secondary level when grouped into Luzon, Visayas and Mindanao is displayed in Figure 5(a) and 5(b). As to LET-elementary level, the 25 COEs/CODs in Luzon had higher performance than the 7 COEs/CODs in Visayas and the 10 COEs/CODs in Mindanao in the three-year period and total. Similarly, the COEs/CODs in Visayas had higher performance than the COEs/CODs in Mindanao.

Luzon COEs/CODs' LET-Elementary performance was higher than those of Visayas by 5.2%, 3.5%, 3.5% and 5.0% in 2010, 2011, 2012 and total, respectively. The difference in the COEs/CODs' passing percentage in Luzon and Visayas was statistically significant ($z = 3.96$, $z = 2.66$, $z = 2.72$ and $z = 6.46$ in 2010, 2011, 2012 and total, respectively, $p < .05$). Likewise, Luzon COEs/CODs' performance was higher than those of Mindanao by 13.7%, 13.8%, 13.0% and 15.0% in 2010, 2011, 2012 and total, respectively. There was a significant difference in the COEs/CODs' passing percentage in Luzon and Mindanao ($z = 10.35$, $z = 10.22$, $z = 9.35$ and $z = 18.47$ in 2010, 2011, 2012 and total, respectively, $p < .05$). Moreover, Visayas COEs/CODs' performance was higher than those of Mindanao by 8.5%, 10.3%, 9.5% and 10.0% in 2010, 2011, 2012 and total, respectively. The difference in the COEs/CODs' passing percentage in Visayas and Mindanao was statistically significant ($z = 6.41$, $z = 7.40$, $z = 6.34$ and $z = 11.84$ in 2010, 2011, 2012 and total, respectively, $p < .05$).

As regards LET-secondary level, the Luzon COEs/CODs had higher performance than the Visayas COEs/CODs and the Mindanao COEs/CODs in the three-year period and total. Likewise, the Visayas COEs/CODs had higher performance than the Mindanao COEs/CODs. Luzon COEs/CODs' performance was higher than those of Visayas by 5.2%, 3.7%, 2.0% and 3.6% in 2010, 2011, 2012 and total, respectively. The difference in the COEs/CODs' passing percentage in Luzon and Visayas was statistically significant ($z = 3.75$, $z = 2.75$ and $z = 4.62$ in 2010, 2011 and total, respectively, $p < .05$). Similarly, Luzon COEs/CODs' performance was higher than those of Mindanao by 16.3%, 16.4%, 13.2% and 15.1% in 2010, 2011, 2012 and total, respectively. There was a significant difference in the COEs/CODs' passing percentage in Luzon and Mindanao ($z = 12.48$, $z = 12.78$, $z = 10.73$ and $z = 20.53$ in 2010, 2011, 2012 and total, respectively, $p < .05$). Furthermore, Visayas COEs/CODs' performance was higher than those of Mindanao by 11.1%, 12.6%, 11.1% and 11.5% in 2010, 2011, 2012 and total, respectively. The difference in the COEs/CODs' passing percentage in Visayas and Mindanao was statistically significant ($z = 7.09$, $z = 8.03$, $z = 7.34$ and $z = 12.77$ in 2010, 2011, 2012 and total, respectively, $p < .05$).

3. Implications of findings to TSU-COE's goal to become a COE

The College of Education has been aiming to be a Center of Excellence for teacher education. Outstanding LET performance is a requisite for such meritorious

designation. Figure 6 displays the TSU-COE's performance in the LET-elementary level from 2010 to 2012, while the number of examinees and passers is presented in Appendix G.

As regards first-timers, a total of 43.37% passed with the highest passing percentage obtained in March and September 2012. Compared to the CODs/COEs, TSU outperformed only one COD namely St. Paul University-Tuguegarao (see Table 1).

Similar to the CODs/COEs, the TSU repeaters' performance was very low (22.40%). But this is still higher than the 16 CODs/COEs (rank 27 to 42). As to overall performance, 29.36% of the TSU examinees passed the LET-elementary. This is higher than the passing percentage of three CODs (rank 39 to 41) and one COE (rank 42).

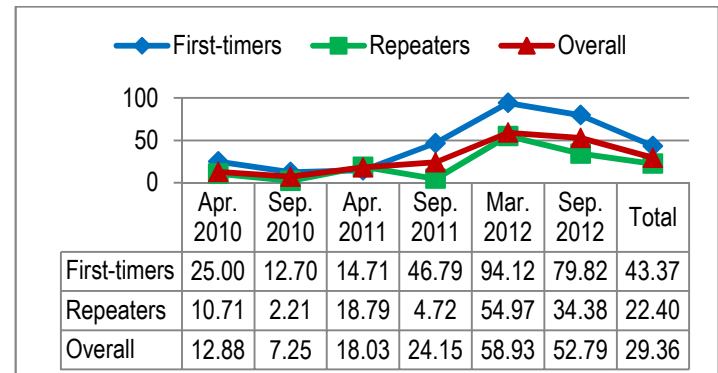


Fig. 6. TSU-COE's Performance in the LET-Elementary

In the LET-secondary level, 46.91% of the first-timers passed and a higher than 50% passing percentage was recorded in March and September 2012 as shown in Figure 7. On the other hand, only 16.31% of the repeaters passed. This poor performance of the repeaters was 30.6% lower than the performance of first-timers. Since nearly three-fifths of the takers were repeaters, who obtained significantly lower passing percentage, the overall performance declined to 29.05%. However, TSU's performance is still higher than two COEs (rank 40 and 42) and one COD (see Table 2).

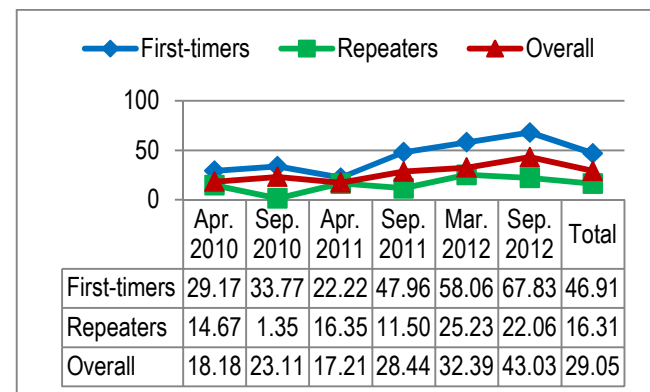


Fig. 7. TSU-COE's Performance in the LET-Secondary

Prior to 2012, the TSU first-timers' performance was poor, which ranged from 12.70% to 46.79% in the LET-elementary and 22.22% to 47.96% in the LET-secondary level. This is due to the fact that many of these graduates were shifters from other colleges of the university who failed in some of their subjects from their previous courses. During that time, the College did not implement strict admission requirements and retention policy. Moreover, departmentalized examination integrating multiple choice questions similar to the LET was only started in school year 2010-2011 and fully implemented in school year 2011-2012. Consequently, majority of the 2010 and 2011 graduates did not pass the LET.

V. IMPLICATIONS AND CONCLUSIONS

De La Salle University-Manila and University of Santo Tomas consistently top the list of highest performing COEs/CODs for teacher education in both elementary and secondary levels from 2010 to 2012. Both universities are COEs, private and located in NCR. In addition, Ateneo De Davao University, a COD and private institution, ranks third and fourth in the elementary and secondary levels, respectively. These universities have adopted "best" practices that place and keep them at the top. Thus, further investigation should be undertaken to explore, document and disseminate these "best" practices so that other TEIs will be inspired and guided to become COEs/CODs.

Philippine Normal University, the National Center for Teacher Education, is the only state university that belongs to the four top performing COEs (4th in LET-elementary and 3rd in LET-secondary). Being the premier teacher education institution in the country, PNU may develop a guidebook that describes the effective procedures on providing and maintaining excellent teacher preparation, which SUCs may also adapt to produce quality graduates.

On the other hand, the lowest performing COEs/CODs in the LET-elementary are private universities namely: University of Luzon, St. Paul University and Manuel S. Enverga University Foundation, while in the LET-secondary are: Father Saturnino Urios University, Western Mindanao State University, Capitol University, Central Bicol University of Agriculture and University of Luzon. All of these have performance which is lower than the national passing percentage in the three-year period. Moreover, the overall performance of 15 HEIs (11 COEs and 4 CODs) and 18 HEIs (13 COEs and 5 CODs) is lower than 50% in the elementary and secondary levels, respectively. The designation of these COEs/CODs needs to be reviewed because of their relatively mediocre performance.

When the performance of the COEs and CODs are compared, the 31 COEs had significantly better performance than the 11 CODs both in elementary and secondary levels. This is not surprising since there are more COEs than CODs that are top

performing. Further, COEs are selected on the basis of excellent performance in instruction and provision of quality pre-service teacher education program.

The 28 private HEIs had significantly better performance than the 14 SUCs in the LET-elementary and slightly higher performance in the secondary level (except in 2012). This result is due to the fact that the top performing COEs/CODs are private universities, which have more passers than the low performing private institutions.

Except in 2012, the COEs/CODs had significantly better performance in the secondary level than in the elementary level. Both levels of examination have the same General Education and Professional Education tests. They only differ in specialization test. The elementary level includes a test on Content Courses with a counterpart of Major Field of Specialization in the secondary level. The test on Content Courses consists of the different subjects namely: English, Mathematics, Science, Filipino, Social Studies, MAPEH, HELE and Values Education. Consequently, examinees find it difficult since they need to master these areas. On the other hand, secondary level examinees focus only on one field of specialization; so they have a better mastery and chance of passing. But in September 2012, the test on Content Courses was removed. Thus the elementary level consists of only General and Professional Education tests; but the secondary level still has three areas. As a result, there was a significantly higher passing percentage in elementary level than in secondary level.

The first-timers had significantly better performance than the repeaters in both levels of examination. In three years, 71% versus 23%, and 73% versus 22% among the first-timers and repeaters passed the elementary and secondary levels, respectively. If we consider the first-timers as the total graduates for the years 2010 to 2012, it suggests that the COEs/CODs deliver high-quality instruction.

Those who failed once or more times and took the LET again are more likely to fail. Thus, repeaters have lower chance of passing the LET since they may be considered to possess a lower level of subject matter content and pedagogical knowledge and understanding. The passing percentage of the repeaters is significantly lower that of the first-timers that resulted to a low overall performance. This is evident in most COEs/CODs, specifically to the 12 lowest performing institutions in the elementary level and to the 15 lowest performing institutions in the secondary level; the number of repeaters is more than that of first-timers. In most cases, HEIs no longer have control over their students when they graduated, particularly in taking licensure examinations repeatedly. Consequently, the number of repeaters continuously increases and exceeds the first-timers. If this situation continues, the LET performance of the HEIs could hardly improve. TEIs have to explore and try effective measures to address this problem.

This area needs further analysis because even COEs/CODs’ performance is adversely affected by the repeaters’ poor performance. Instead of indicating 2 for repeaters, the Professional Regulation Commission may reflect the actual number of times a repeater has taken the LET in the *List of Examinees* provided to every HEI. Then a more thorough analysis on the performance of repeaters may be done, such as developing a mathematical model for predicting the probability of passing given the previous rating and number of times taken the LET. PRC may also formulate policy limiting the number of times an examinee may take the LET and requiring old graduates and repeaters to take refresher courses before allowing them to take the examination again.

In both elementary and secondary levels, the 25 COEs/CODs in Luzon had significantly better performance than the 7 in Visayas and the 10 in Mindanao. Also, the COEs/CODs in Visayas significantly performed better than those in Mindanao. This can be attributed to the fact that three of the top performing COEs/CODs are in NCR while the lowest performing ones are in Mindanao. More support and assistance should be extended to the COEs/CODs in Mindanao so that they would perform equally well as the other COEs/CODs in Luzon and Visayas. Linkages and collaborations among high performing COEs/CODs in Mindanao such as Ateneo De Davao University and Xavier University may also be established so that training, research and extension activities can be conducted to continuously improve graduates’ performance.

The Tarlac State University-College of Education graduates obtained a remarkable passing percentage of more than 50% in 2012. This is the result of the practices recently implemented by the College such as administering departmentalized examinations with multiple choice items similar to the LET and conducting intensive review among graduating students. Moreover, the College has started the implementation of its BOR-approved admission and retention policy.

TSU performed better than the four COEs/CODs and three COEs/CODs in the elementary and secondary levels, respectively. This suggests that the TSU College of Education can achieve its goal to be a Center of Excellence for teacher education as far as its improving LET performance is concerned. With the implementation of the admission and retention policy as well as the good practices of the College and other high performing TEIs based on benchmarking efforts, TSU can also be recognized as one of the Centers of Excellence for teacher education in the future by implementing effective measures to improve the LET performance of the graduates. And this calls for further researches on the effects of these policies and practices on the students’ academic and LET performance, and other studies exploring the determinants that may significantly predict success in the licensure examination

REFERENCES

[1] Alexander, C. (2004) *Does teacher certification matter? Teacher certification and middle school mathematics achievement in Texas*. Paper presented at the Annual Meeting of the American Educational Research Association, San Diego, California.

[2] CHED Memorandum Order (CMO) No. 26, s. 2007. *Criteria and Implementing Guidelines for the Identification, Support and Development of Centers of Excellence for Teacher Education Programs*.

[3] CMO No. 44, s. 2012. *Addendum to CMO No. 11, Series of 2012*.

[4] Nool, et. al (2012). *Centers of excellence and centers of development for teacher education: Their contribution to the elementary teacher force*, IPEDR, Vol. 30, pp.326-330.

[5] PRC (2010, May 21) *April 2010 Teacher Licensure Examination results released in twenty-four (24) working days*. Retrieved from: <http://www.prc.gov.ph/news/?id=122>
Full text retrieved from: <http://www.prc.gov.ph/uploaded/documents/LET0410ft.pdf>

[6] PRC (2010, November 16) *September 2010 Results of Licensure Examination for Teachers released in thirty-eight (38) working days*. Retrieved from: <http://www.prc.gov.ph/news/?id=79>
Full text retrieved from: <http://www.prc.gov.ph/uploaded/documents/LET0910ft.pdf>

[7] PRC (2011, May 13) *April 2011 Results of Licensure Examination for Teachers released in twenty-nine (29) working days*. Retrieved from: <http://www.prc.gov.ph/news/?id=16>
Full text retrieved from: <http://www.prc.gov.ph/uploaded/documents/LET0411ft.pdf>

[8] PRC (2011, November 17) *September 2011 Results of Licensure Examination for Teachers released in thirty-nine (39) working days*. Retrieved from: <http://www.prc.gov.ph/news/?id=217>
Full text retrieved from: <http://www.prc.gov.ph/uploaded/documents/LET0911ft.pdf>

[9] PRC (2012, April 24) *March 2012 Results of Licensure Examination for Teachers released in thirty (30) working days*. Retrieved from: <http://www.prc.gov.ph/news/?id=312>
Full text retrieved from: <http://www.prc.gov.ph/uploaded/documents/LET0312ft.pdf>

[10] PRC (2012, November 26) *September 2011 Results of Licensure Examination for Teachers released in forty-two (42) working days*. Retrieved from: <http://www.prc.gov.ph/news/?id=448>
Full text retrieved from: <http://www.prc.gov.ph/uploaded/documents/LET0912ft.pdf>

[11] Bluman, A. G. (2012). *Elementary statistics: A step by step approach (8th ed)*. New York: McGraw Hill.

[12] Republic Act No. 10229. *An Act Converting the Catanduanes State Colleges in the Province of Catanduanes into a State University to be known as the Catanduanes State University and Appropriating Funds Therefor*. Retrieved from: http://www.lawphil.net/statutes/repacts/ra2012/ra_10229_2012.html

Table 1. LET Performance of the COEs/CODs in the LET-Elementary from 2010-2012

| <i>Centers of Excellence</i> | First-timers | | | | Repeaters | | | | Overall | | | |
|---|--------------|---------|-----------|------|-----------|---------|-----------|------|---------|---------|-----------|------|
| | Takers | Passers | % Passing | Rank | Takers | Passers | % Passing | Rank | Takers | Passers | % Passing | Rank |
| 1 Angeles Univ Foundation | 76 | 54 | 71.05 | 24 | 63 | 21 | 33.33 | 14 | 139 | 75 | 53.96 | 19 |
| 2 Ateneo De Naga Univ–Naga City | 75 | 63 | 84.00 | 10 | 25 | 8 | 32.00 | 18 | 100 | 71 | 71.00 | 8 |
| 3 Bicol Univ–Legazpi City | 633 | 432 | 68.25 | 27 | 568 | 179 | 31.51 | 19 | 1,201 | 611 | 50.87 | 23 |
| 4 Capitol Univ–Cagayan de Oro City | 96 | 61 | 63.54 | 31 | 156 | 22 | 14.10 | 39 | 252 | 83 | 32.94 | 35 |
| 5 Central Luzon State Univ | 276 | 212 | 76.81 | 16 | 201 | 57 | 28.36 | 21 | 477 | 269 | 56.39 | 16 |
| 6 Centro Escolar Univ–Manila | 54 | 41 | 75.93 | 19 | 20 | 5 | 25.00 | 25 | 74 | 46 | 62.16 | 14 |
| 7 De La Salle Univ–Cavite | 53 | 31 | 58.49 | 36 | 67 | 13 | 19.40 | 31 | 120 | 44 | 36.67 | 33 |
| 8 De La Salle Univ–Manila | 142 | 138 | 97.18 | 2 | 2 | 2 | 100.00 | 1 | 144 | 140 | 97.22 | 1 |
| 9 Don Mariano Marcos Memorial State Univ–Agoo | 383 | 204 | 53.26 | 39 | 344 | 97 | 28.20 | 22 | 727 | 301 | 41.40 | 30 |
| 10 Father Saturnino Urios Univ–Butuan City | 62 | 49 | 79.03 | 13 | 156 | 19 | 12.18 | 41 | 218 | 68 | 31.19 | 37 |
| 11 Leyte Normal Univ–Tacloban City | 1,327 | 748 | 56.37 | 37 | 2,829 | 546 | 19.30 | 32 | 4,156 | 1,294 | 31.14 | 38 |
| 12 Mariano Marcos State Univ–Laoag City | 411 | 337 | 82.00 | 11 | 177 | 78 | 44.07 | 7 | 588 | 415 | 70.58 | 9 |
| 13 Mindanao State Univ–Iligan Institute of Technology | 318 | 198 | 62.26 | 33 | 151 | 28 | 18.54 | 34 | 469 | 226 | 48.19 | 26 |

| | | | | | | | | | | | | | |
|----|--|-----|-----|-------|----|-----|----|-------|----|-----|-----|-------|----|
| 14 | Notre Dame of Marbel Univ–Koronadal City | 146 | 109 | 74.66 | 20 | 176 | 55 | 31.25 | 20 | 322 | 164 | 50.93 | 22 |
| 15 | Palawan State Univ–Puerto Princesa | 400 | 267 | 66.75 | 28 | 278 | 75 | 26.98 | 24 | 678 | 342 | 50.44 | 24 |
| 16 | Philippine Normal Univ–Manila | 610 | 563 | 92.30 | 3 | 136 | 64 | 47.06 | 6 | 746 | 627 | 84.05 | 4 |
| 17 | Saint Louis College–San Fernando, La Union | 34 | 25 | 73.53 | 21 | 42 | 14 | 33.33 | 13 | 76 | 39 | 51.32 | 21 |
| 18 | Saint Louis Univ | 251 | 211 | 84.06 | 9 | 50 | 28 | 56.00 | 4 | 301 | 239 | 79.40 | 7 |
| 19 | Silliman Univ–Dumaguete City | 47 | 37 | 78.72 | 14 | 19 | 7 | 36.84 | 11 | 66 | 44 | 66.67 | 12 |
| 20 | St. Mary's University, Bayombong | 71 | 65 | 91.55 | 4 | 41 | 8 | 19.51 | 30 | 112 | 73 | 65.18 | 13 |
| 21 | Univ of Batangas | 79 | 47 | 59.49 | 35 | 197 | 40 | 20.30 | 28 | 276 | 87 | 31.52 | 36 |
| 22 | Univ of Luzon, Dagupan City | 90 | 44 | 48.89 | 40 | 199 | 17 | 8.54 | 42 | 289 | 61 | 21.11 | 42 |
| 23 | Univ of Mindanao, Matina, Davao City | 260 | 181 | 69.62 | 25 | 384 | 49 | 12.76 | 40 | 644 | 230 | 35.71 | 34 |

Table 1. continued

| <u>Centers of Excellence</u> | First-timers | | | | Repeaters | | | | Overall | | | |
|---|--------------|---------|-----------|------|-----------|---------|-----------|------|---------|---------|-----------|------|
| | Takers | Passers | % Passing | Rank | Takers | Passers | % Passing | Rank | Takers | Passers | % Passing | Rank |
| 24 Univ of San Carlos–Cebu City | 221 | 172 | 77.83 | 15 | 75 | 31 | 41.33 | 10 | 296 | 203 | 68.58 | 11 |
| 25 Univ of San Jose Recoletos–Cebu City | 161 | 116 | 72.05 | 22 | 215 | 42 | 19.53 | 29 | 376 | 158 | 42.02 | 29 |
| 26 Univ of Santo Tomas–Manila | 297 | 289 | 97.31 | 1 | 14 | 7 | 50.00 | 5 | 311 | 296 | 95.18 | 2 |
| 27 Univ of Southeastern Philippines–Davao City | 347 | 217 | 62.54 | 32 | 381 | 90 | 23.62 | 26 | 728 | 307 | 42.17 | 28 |
| 28 Univ of the Cordilleras | 133 | 102 | 76.69 | 17 | 96 | 27 | 28.13 | 23 | 229 | 129 | 56.33 | 17 |
| 29 Univ of the Immaculate Conception–Davao City | 22 | 14 | 63.64 | 30 | 27 | 5 | 18.52 | 35 | 49 | 19 | 38.78 | 31 |
| 30 Universidad De Santa Isabel, Naga City | 34 | 30 | 88.24 | 5 | 35 | 6 | 17.14 | 37 | 69 | 36 | 52.17 | 20 |
| 31 West Visayas State Univ–Iloilo City | 744 | 641 | 86.16 | 8 | 138 | 85 | 61.59 | 3 | 882 | 726 | 82.31 | 5 |
| <u>Centers of Development</u> | | | | | | | | | | | | |
| 32 Ateneo De Davao Univ–Davao City | 24 | 21 | 87.50 | 7 | 4 | 3 | 75.00 | 2 | 28 | 24 | 85.71 | 3 |
| 33 Cebu Normal Univ–Cebu City | 994 | 799 | 80.38 | 12 | 389 | 163 | 41.90 | 8 | 1,383 | 962 | 69.56 | 10 |
| 34 Central Bicol State Univ of Agriculture–Pili | 95 | 66 | 69.47 | 26 | 112 | 37 | 33.04 | 16 | 207 | 103 | 49.76 | 25 |
| 35 Colegio de Dagupan | 21 | 14 | 66.67 | 29 | 12 | 4 | 33.33 | 15 | 33 | 18 | 54.55 | 18 |
| 36 Holy Angel Univ | 102 | 78 | 76.47 | 18 | 89 | 31 | 34.83 | 12 | 191 | 109 | 57.07 | 15 |
| 37 Manuel S. Enverga University Foundation–Lucena | 192 | 104 | 54.17 | 38 | 475 | 68 | 14.32 | 38 | 667 | 172 | 25.79 | 40 |
| 38 Pangasinan State Univ–Bayambang | 396 | 285 | 71.97 | 23 | 673 | 124 | 18.42 | 36 | 1,069 | 409 | 38.26 | 32 |
| 39 St. Paul Univ–Tuguegarao | 54 | 23 | 42.59 | 42 | 268 | 50 | 18.66 | 33 | 322 | 73 | 22.67 | 41 |
| 40 Univ of San Agustin, Iloilo City | 159 | 98 | 61.64 | 34 | 173 | 57 | 32.95 | 17 | 332 | 155 | 46.69 | 27 |
| 41 Western Mindanao State Univ–Zamboanga City | 1,067 | 510 | 47.80 | 41 | 2,285 | 471 | 20.61 | 27 | 3,352 | 981 | 29.27 | 39 |
| 42 Xavier Univ–Cagayan de Oro City | 314 | 276 | 87.90 | 6 | 53 | 22 | 41.51 | 9 | 367 | 298 | 81.20 | 6 |
| TOTAL | 11,271 | 7,972 | 70.73 | | 11,795 | 2,755 | 23.36 | | 23,066 | 10,727 | 46.51 | |
| NATIONAL | 79,161 | 40,508 | 51.17 | | 154,493 | 26,659 | 17.26 | | 233,654 | 67,167 | 28.75 | |

Note: The takers and passers in the Accelerated Teacher Education Program (ATEP) in April 2010, September 2010 and April 2011 are included.

Table 2. LET Performance of the COEs/CODs in the LET-Secondary from 2010-2012

| <u>Centers of Excellence</u> | First-timers | | | | Repeaters | | | | Overall | | | |
|---|--------------|---------|-----------|------|-----------|---------|-----------|------|---------|---------|-----------|------|
| | Takers | Passers | % Passing | Rank | Takers | Passers | % Passing | Rank | Takers | Passers | % Passing | Rank |
| 1 Angeles Univ Foundation | 106 | 82 | 77.36 | 12 | 44 | 12 | 27.27 | 14 | 150 | 94 | 62.67 | 9 |
| 2 Ateneo De Naga Univ–Naga City | 186 | 155 | 83.33 | 7 | 70 | 18 | 25.71 | 16 | 256 | 173 | 67.58 | 8 |
| 3 Bicol Univ–Legazpi City | 1,063 | 653 | 61.43 | 33 | 762 | 170 | 22.31 | 21 | 1,825 | 823 | 45.10 | 26 |
| 4 Capitol Univ–Cagayan de Oro City | 55 | 33 | 60.00 | 34 | 95 | 9 | 9.47 | 40 | 150 | 42 | 28.00 | 40 |
| 5 Central Luzon State Univ | 490 | 260 | 53.06 | 39 | 535 | 94 | 17.57 | 30 | 1,025 | 354 | 34.54 | 35 |
| 6 Centro Escolar Univ–Manila | 175 | 118 | 67.43 | 26 | 99 | 19 | 19.19 | 28 | 274 | 137 | 50.00 | 24 |
| 7 De La Salle Univ–Cavite | 243 | 192 | 79.01 | 10 | 154 | 35 | 22.73 | 20 | 397 | 227 | 57.18 | 14 |
| 8 De La Salle Univ–Manila | 153 | 152 | 99.35 | 1 | 6 | 5 | 83.33 | 1 | 159 | 157 | 98.74 | 1 |
| 9 Don Mariano Marcos Memorial State Univ–Agoo | 368 | 218 | 59.24 | 35 | 302 | 64 | 21.19 | 24 | 670 | 282 | 42.09 | 27 |
| 10 Father Saturnino Urios Univ–Butuan City | 56 | 30 | 53.57 | 38 | 159 | 19 | 11.95 | 38 | 215 | 49 | 22.79 | 42 |
| 11 Leyte Normal Univ–Tacloban City | 467 | 346 | 74.09 | 16 | 689 | 106 | 15.38 | 32 | 1,156 | 452 | 39.10 | 31 |
| 12 Mariano Marcos State Univ–Laoag City | 311 | 209 | 67.20 | 27 | 155 | 44 | 28.39 | 10 | 466 | 253 | 54.29 | 17 |
| 13 Mindanao State Univ–Iligan Institute of Technology | 782 | 549 | 70.20 | 21 | 390 | 138 | 35.38 | 6 | 1,172 | 687 | 58.62 | 13 |
| 14 Notre Dame of Marbel Univ–Koronadal City | 271 | 178 | 65.68 | 29 | 347 | 63 | 18.16 | 29 | 618 | 241 | 39.00 | 32 |
| 15 Palawan State Univ–Puerto Princesa | 294 | 223 | 75.85 | 13 | 217 | 46 | 21.20 | 23 | 511 | 269 | 52.64 | 21 |
| 16 Philippine Normal Univ–Manila | 2,280 | 2,110 | 92.54 | 2 | 310 | 137 | 44.19 | 4 | 2,590 | 2,247 | 86.76 | 3 |
| 17 Saint Louis College–San Fernando, La Union | 97 | 70 | 72.16 | 18 | 69 | 20 | 28.99 | 9 | 166 | 90 | 54.22 | 18 |
| 18 Saint Louis Univ | 601 | 498 | 82.86 | 8 | 132 | 57 | 43.18 | 5 | 733 | 555 | 75.72 | 6 |
| 19 Silliman Univ–Dumaguete City | 108 | 85 | 78.70 | 11 | 57 | 16 | 28.07 | 11 | 165 | 101 | 61.21 | 10 |
| 20 St. Mary's University, Bayombong | 176 | 128 | 72.73 | 17 | 120 | 29 | 24.17 | 19 | 296 | 157 | 53.04 | 20 |
| 21 Univ of Batangas | 116 | 77 | 66.38 | 28 | 170 | 27 | 15.88 | 31 | 286 | 104 | 36.36 | 34 |
| 22 Univ of Luzon, Dagupan City | 127 | 64 | 50.39 | 41 | 150 | 19 | 12.67 | 37 | 277 | 83 | 29.96 | 38 |
| 23 Univ of Mindanao, Matina, Davao City | 402 | 259 | 64.43 | 30 | 438 | 48 | 10.96 | 39 | 840 | 307 | 36.55 | 33 |

Table 2. continued

| <i>Centers of Excellence</i> | First-timers | | | | Repeaters | | | | Overall | | | |
|---|--------------|---------|-----------|------|-----------|---------|-----------|------|---------|---------|-----------|------|
| | Takers | Passers | % Passing | Rank | Takers | Passers | % Passing | Rank | Takers | Passers | % Passing | Rank |
| 24 Univ of San Carlos–Cebu City | 339 | 287 | 84.66 | 6 | 99 | 27 | 27.27 | 13 | 438 | 314 | 71.69 | 7 |
| 25 Univ of San Jose Recoletos–Cebu City | 274 | 158 | 57.66 | 37 | 238 | 47 | 19.75 | 26 | 512 | 205 | 40.04 | 30 |
| 26 Univ of Santo Tomas–Manila | 681 | 617 | 90.60 | 4 | 69 | 37 | 53.62 | 3 | 750 | 654 | 87.20 | 2 |
| 27 Univ of Southeastern Philippines–Davao City | 632 | 451 | 71.36 | 19 | 448 | 139 | 31.03 | 8 | 1,080 | 590 | 54.63 | 16 |
| 28 Univ of the Cordilleras | 500 | 346 | 69.20 | 22 | 239 | 46 | 19.25 | 27 | 739 | 392 | 53.04 | 19 |
| 29 Univ of the Immaculate Conception–Davao City | 78 | 55 | 70.51 | 20 | 60 | 8 | 13.33 | 36 | 138 | 63 | 45.65 | 25 |
| 30 Universidad De Santa Isabel, Naga City | 78 | 53 | 67.95 | 25 | 103 | 22 | 21.36 | 22 | 181 | 75 | 41.44 | 28 |
| 31 West Visayas State Univ–Iloilo City | 655 | 493 | 75.27 | 14 | 369 | 117 | 31.71 | 7 | 1,024 | 610 | 59.57 | 12 |
| <i>Centers of Development</i> | | | | | | | | | | | | |
| 32 Ateneo De Davao Univ–Davao City | 62 | 57 | 91.94 | 3 | 6 | 0 | 0.00 | 42 | 68 | 57 | 83.82 | 4 |
| 33 Cebu Normal Univ–Cebu City | 1,372 | 1,026 | 74.78 | 15 | 583 | 157 | 26.93 | 15 | 1,955 | 1,183 | 60.51 | 11 |
| 34 Central Bicol State Univ of Agriculture–Pili | 234 | 124 | 52.99 | 40 | 339 | 46 | 13.57 | 35 | 573 | 170 | 29.67 | 39 |
| 35 Colegio de Dagupan | 75 | 44 | 58.67 | 36 | 20 | 5 | 25.00 | 17 | 95 | 49 | 51.58 | 22 |
| 36 Holy Angel Univ | 166 | 114 | 68.67 | 23 | 125 | 35 | 28.00 | 12 | 291 | 149 | 51.20 | 23 |
| 37 Manuel S. Enverga University Foundation–Lucena | 148 | 101 | 68.24 | 24 | 237 | 22 | 9.28 | 41 | 385 | 123 | 31.95 | 37 |
| 38 Pangasinan State Univ–Bayambang | 334 | 264 | 79.04 | 9 | 260 | 64 | 24.62 | 18 | 594 | 328 | 55.22 | 15 |
| 39 St. Paul Univ–Tuguegarao | 141 | 87 | 61.70 | 32 | 215 | 30 | 13.95 | 34 | 356 | 117 | 32.87 | 36 |
| 40 Univ of San Agustin, Iloilo City | 162 | 101 | 62.35 | 31 | 167 | 34 | 20.36 | 25 | 329 | 135 | 41.03 | 29 |
| 41 Western Mindanao State Univ–Zamboanga City | 869 | 408 | 46.95 | 42 | 1,378 | 201 | 14.59 | 33 | 2,247 | 609 | 27.10 | 41 |
| 42 Xavier Univ–Cagayan de Oro City | 238 | 207 | 86.97 | 5 | 42 | 25 | 59.52 | 2 | 280 | 232 | 82.86 | 5 |
| TOTAL | 15,965 | 11,682 | 73.17 | | 10,467 | 2,257 | 21.56 | | 26,432 | 13,939 | 52.74 | |
| NATIONAL | 88,706 | 47,023 | 53.01 | | 123,447 | 17,751 | 14.38 | | 212,153 | 64,774 | 30.53 | |

Appendix A

List of Centers of Excellence and Centers of Development for Teacher Education as of September 20, 2012

| <i>Centers of Excellence</i> | <i>Region</i> | <i>Location</i> | <i>Type</i> |
|---|---------------|-----------------|-------------|
| 1 Angeles Univ Foundation (AUF) | III | Luzon | Private |
| 2 Ateneo De Naga Univ – Naga City (ADNU) | V | Luzon | Private |
| 3 Bicol Univ – Legazpi City (BU-L) | V | Luzon | SUC |
| 4 Capitol Univ – Cagayan de Oro City (CU-CDO) | X | Mindanao | Private |
| 5 Central Luzon State Univ (CLSU) | III | Luzon | SUC |
| 6 Centro Escolar Univ – Manila (CEU-M) | NCR | Luzon | Private |
| 7 De La Salle Univ – Dasmarinas, Cavite (DLSU-D) | IV-A | Luzon | Private |
| 8 De La Salle Univ – Manila (DLSU-M) | NCR | Luzon | Private |
| 9 Don Mariano Marcos Memorial State Univ – South La Union – Agoo (DMMSU-SLU-A) | I | Luzon | SUC |
| 10 Father Saturnino Urios Univ – Butuan City (FSUU-B) | CARAGA | Mindanao | Private |
| 11 Leyte Normal Univ – Tacloban City (LNU-T) | VIII | Visayas | SUC |
| 12 Mariano Marcos State Univ – Laoag City (MMSU-L) | I | Luzon | SUC |
| 13 Mindanao State Univ – Iligan Institute of Technology (MSU-IIT) | X | Mindanao | SUC |
| 14 Notre Dame of Marbel Univ – Koronadal City (NDMU-K) | XII | Mindanao | Private |
| 15 Palawan State Univ – Puerto Princesa (PSU-PP) | IV-B | Luzon | SUC |
| 16 Philippine Normal Univ – Manila (PNU-M) | NCR | Luzon | SUC |
| 17 Saint Louis College – San Fernando, La Union (SLC-SF) | I | Luzon | Private |
| 18 Saint Louis Univ (SLU) | CAR | Luzon | Private |
| 19 Silliman Univ – Dumaguete City (SU-D) | VII | Visayas | Private |
| 20 St. Mary's University, Bayombong (SMU-B) | II | Luzon | Private |
| 21 Univ of Batangas (UB) | IV-A | Luzon | Private |
| 22 Univ of Luzon, Dagupan City (UL-D) | I | Luzon | Private |
| 23 Univ of Mindanao, Matina, Davao City (UM-D) | XI | Mindanao | Private |
| 24 Univ of San Carlos – Cebu City (USC-C) | VII | Visayas | Private |
| 25 Univ of San Jose Recoletos – Cebu City (USJR-C) | VII | Visayas | Private |
| 26 Univ of Santo Tomas – Manila (UST) | NCR | Luzon | Private |
| 27 Univ of Southeastern Philippines – Davao City (USEP-D) | XI | Mindanao | SUC |
| 28 Univ of the Cordilleras (UC) | CAR | Luzon | Private |
| 29 Univ of the Immaculate Conception – Davao City (UIC-D) | XI | Mindanao | Private |
| 30 Universidad De Santa Isabel, Naga City (UDSI-N) | V | Luzon | Private |
| 31 West Visayas State Univ – Iloilo City (WVSU-I) | VI | Visayas | SUC |
| <i>Centers of Development</i> | | | |
| 32 Ateneo De Davao Univ – Davao City (ADDU) | XI | Mindanao | Private |
| 33 Catanduanes State Univ – Catanduanes City (for. Catanduanes State Colleges) | V | Luzon | SUC |
| 34 Cebu Normal Univ – Cebu City (CNU-C) | VII | Visayas | SUC |
| 35 Central Bicol State Univ of Agriculture – Pili, Camarines Sur (CBSUA-P) (for. Cam Sur SAC) | V | Luzon | SUC |
| 36 Colegio de Dagupan (CDD) | I | Luzon | Private |
| 37 Holy Angel Univ (HAU) | III | Luzon | Private |
| 38 Manuel S. Enverga University Foundation (MSEUF), Lucena City (MSEUF-L) | IV-A | Luzon | Private |
| 39 Pangasinan State Univ – Bayambang (PSU-B) | I | Luzon | SUC |
| 40 St. Paul Univ – Tuguegarao (SPU-T) | II | Luzon | Private |
| 41 Univ of San Agustin, Iloilo City (USA-I) | VI | Visayas | Private |
| 42 Western Mindanao State Univ – Zamboanga City (WMSU-Z) | IX | Mindanao | SUC |
| 43 Xavier Univ – Cagayan de Oro City (XU-CDO) | X | Mindanao | Private |

Source: CHED Memorandum Order No. 44, series of 2012 [3]
Note: Catanduanes State University – Catanduanes City is excluded in this study because the campus indicated in the PRC Performance of Schools is Virac. CSC was converted into a state university on October 19, 2012. [12]

Appendix B

Number of Takers and Passers in LET-Elementary from 2010-2012

| <div>Centers of Excellence</div> | Takers | | | | | | | | | | | | Passers | | | | | | | | | | | |
|----------------------------------|--------------|------|------|-------|-----------|------|------|-------|---------|------|------|-------|--------------|------|------|-------|-----------|------|------|-------|---------|------|------|-------|
| | First-timers | | | | Repeaters | | | | Overall | | | | First-timers | | | | Repeaters | | | | Overall | | | |
| | 2010 | 2011 | 2012 | Total | 2010 | 2011 | 2012 | Total | 2010 | 2011 | 2012 | Total | 2010 | 2011 | 2012 | Total | 2010 | 2011 | 2012 | Total | 2010 | 2011 | 2012 | Total |
| 1 AUF | 30 | 20 | 26 | 76 | 16 | 20 | 27 | 63 | 46 | 40 | 53 | 139 | 17 | 12 | 25 | 54 | 4 | 3 | 14 | 21 | 21 | 15 | 39 | 75 |
| 2 ADNU | 25 | 17 | 33 | 75 | 8 | 8 | 9 | 25 | 33 | 25 | 42 | 100 | 20 | 11 | 32 | 63 | 0 | 1 | 7 | 8 | 20 | 12 | 39 | 71 |
| 3 BU-L | 187 | 222 | 224 | 633 | 189 | 210 | 169 | 568 | 376 | 432 | 393 | 1201 | 97 | 135 | 200 | 432 | 42 | 42 | 95 | 179 | 139 | 177 | 295 | 611 |
| 4 CU-CDO | 13 | 48 | 35 | 96 | 51 | 47 | 58 | 156 | 64 | 95 | 93 | 252 | 8 | 20 | 33 | 61 | 4 | 3 | 15 | 22 | 12 | 23 | 48 | 83 |
| 5 CLSU | 87 | 102 | 87 | 276 | 65 | 69 | 67 | 201 | 152 | 171 | 154 | 477 | 63 | 73 | 76 | 212 | 6 | 11 | 40 | 57 | 69 | 84 | 116 | 269 |
| 6 CEU-M | 16 | 20 | 18 | 54 | 8 | 7 | 5 | 20 | 24 | 27 | 23 | 74 | 11 | 13 | 17 | 41 | 3 | 0 | 2 | 5 | 14 | 13 | 19 | 46 |
| 7 DLSU-C | 23 | 18 | 12 | 53 | 17 | 29 | 21 | 67 | 40 | 47 | 33 | 120 | 12 | 10 | 9 | 31 | 1 | 3 | 9 | 13 | 13 | 13 | 18 | 44 |
| 8 DLSU-M | 41 | 55 | 46 | 142 | 1 | 1 | 0 | 2 | 42 | 56 | 46 | 144 | 39 | 53 | 46 | 138 | 1 | 1 | 0 | 2 | 40 | 54 | 46 | 140 |
| 9 DMMMSU-SLC-A | 135 | 117 | 131 | 383 | 102 | 133 | 109 | 344 | 237 | 250 | 240 | 727 | 56 | 53 | 95 | 204 | 16 | 26 | 55 | 97 | 72 | 79 | 150 | 301 |
| 10 FSUU-B | 15 | 9 | 38 | 62 | 58 | 56 | 42 | 156 | 73 | 65 | 80 | 218 | 6 | 8 | 35 | 49 | 4 | 4 | 11 | 19 | 10 | 12 | 46 | 68 |
| 11 LNU-T | 489 | 425 | 413 | 1327 | 982 | 1013 | 834 | 2829 | 1471 | 1438 | 1247 | 4156 | 215 | 219 | 314 | 748 | 21 | 115 | 344 | 480 | 236 | 334 | 658 | 1228 |
| 12 MMSU-L | 120 | 138 | 153 | 411 | 46 | 69 | 62 | 177 | 166 | 207 | 215 | 588 | 98 | 92 | 147 | 337 | 13 | 22 | 43 | 78 | 111 | 114 | 190 | 415 |
| 13 MSU-IIT | 165 | 70 | 83 | 318 | 8 | 88 | 55 | 151 | 173 | 158 | 138 | 469 | 58 | 58 | 82 | 198 | 3 | 9 | 16 | 28 | 61 | 67 | 98 | 226 |
| 14 NDMU-K | 58 | 52 | 36 | 146 | 50 | 70 | 56 | 176 | 108 | 122 | 92 | 322 | 38 | 37 | 34 | 109 | 12 | 12 | 31 | 55 | 50 | 49 | 65 | 164 |
| 15 PSU-PP | 141 | 166 | 93 | 400 | 55 | 75 | 148 | 278 | 196 | 241 | 241 | 678 | 62 | 122 | 83 | 267 | 3 | 9 | 63 | 75 | 65 | 131 | 146 | 342 |
| 16 PNU-M | 169 | 203 | 238 | 610 | 42 | 51 | 43 | 136 | 211 | 254 | 281 | 746 | 139 | 189 | 235 | 563 | 22 | 13 | 29 | 64 | 161 | 202 | 264 | 627 |
| 17 SLC-SF | 11 | 9 | 14 | 34 | 18 | 14 | 10 | 42 | 29 | 23 | 24 | 76 | 8 | 5 | 12 | 25 | 4 | 2 | 8 | 14 | 12 | 7 | 20 | 39 |
| 18 SLU | 95 | 87 | 69 | 251 | 13 | 23 | 14 | 50 | 108 | 110 | 83 | 301 | 73 | 75 | 63 | 211 | 8 | 10 | 10 | 28 | 81 | 85 | 73 | 239 |
| 19 SU-D | 10 | 16 | 21 | 47 | 1 | 7 | 11 | 19 | 11 | 23 | 32 | 66 | 7 | 9 | 21 | 37 | 0 | 3 | 4 | 7 | 7 | 12 | 25 | 44 |
| 20 SMU-B | 17 | 28 | 26 | 71 | 14 | 16 | 11 | 41 | 31 | 44 | 37 | 112 | 15 | 26 | 24 | 65 | 2 | 2 | 4 | 8 | 17 | 28 | 28 | 73 |
| 21 UB | 22 | 34 | 23 | 79 | 55 | 68 | 74 | 197 | 77 | 102 | 97 | 276 | 11 | 17 | 19 | 47 | 2 | 7 | 31 | 40 | 13 | 24 | 50 | 87 |
| 22 UL-D | 28 | 36 | 26 | 90 | 51 | 79 | 69 | 199 | 79 | 115 | 95 | 289 | 17 | 12 | 15 | 44 | 1 | 5 | 11 | 17 | 18 | 17 | 26 | 61 |

Appendix B. continued

| <u>Centers of Excellence</u> | First-timers | | | | Repeaters | | | | Overall | | | | First-timers | | | | Repeaters | | | | Overall | | | |
|-------------------------------|--------------|------|------|-------|-----------|------|------|-------|---------|------|------|-------|--------------|------|------|-------|-----------|------|------|-------|---------|------|------|-------|
| | 2010 | 2011 | 2012 | Total | 2010 | 2011 | 2012 | Total | 2010 | 2011 | 2012 | Total | 2010 | 2011 | 2012 | Total | 2010 | 2011 | 2012 | Total | 2010 | 2011 | 2012 | Total |
| 23 UM-D | 68 | 95 | 97 | 260 | 114 | 139 | 131 | 384 | 182 | 234 | 228 | 644 | 41 | 61 | 79 | 181 | 5 | 7 | 37 | 49 | 46 | 68 | 116 | 230 |
| 24 USC-C | 77 | 80 | 64 | 221 | 17 | 26 | 32 | 75 | 94 | 106 | 96 | 296 | 57 | 55 | 60 | 172 | 4 | 5 | 22 | 31 | 61 | 60 | 82 | 203 |
| 25 USJR-C | 50 | 55 | 56 | 161 | 86 | 68 | 61 | 215 | 136 | 123 | 117 | 376 | 30 | 38 | 48 | 116 | 12 | 5 | 25 | 42 | 42 | 43 | 73 | 158 |
| 26 UST | 71 | 87 | 139 | 297 | 6 | 6 | 2 | 14 | 77 | 93 | 141 | 311 | 65 | 86 | 138 | 289 | 4 | 3 | 0 | 7 | 69 | 89 | 138 | 296 |
| 27 USEP-D | 148 | 94 | 105 | 347 | 140 | 127 | 114 | 381 | 288 | 221 | 219 | 728 | 57 | 70 | 90 | 217 | 20 | 30 | 40 | 90 | 77 | 100 | 130 | 307 |
| 28 UC | 39 | 40 | 54 | 133 | 32 | 35 | 29 | 96 | 71 | 75 | 83 | 229 | 24 | 27 | 51 | 102 | 6 | 5 | 16 | 27 | 30 | 32 | 67 | 129 |
| 29 UIC-D | 10 | 5 | 7 | 22 | 11 | 8 | 8 | 27 | 21 | 13 | 15 | 49 | 5 | 4 | 5 | 14 | 0 | 2 | 3 | 5 | 5 | 6 | 8 | 19 |
| 30 UDSI-N | 8 | 12 | 14 | 34 | 14 | 10 | 11 | 35 | 22 | 22 | 25 | 69 | 5 | 11 | 14 | 30 | 3 | 0 | 3 | 6 | 8 | 11 | 17 | 36 |
| 31 WVSU-I | 337 | 218 | 189 | 744 | 36 | 71 | 31 | 138 | 373 | 289 | 220 | 882 | 251 | 201 | 189 | 641 | 18 | 40 | 27 | 85 | 269 | 241 | 216 | 726 |
| Subtotal | 2705 | 2578 | 2570 | 7853 | 2306 | 2643 | 2313 | 7262 | 5011 | 5221 | 5883 | 15115 | 1605 | 1802 | 2291 | 5698 | 244 | 400 | 1015 | 1659 | 1849 | 2202 | 3306 | 7357 |
| <u>Centers of Development</u> | | | | | | | | | | | | | | | | | | | | | | | | |
| 32 ADDU | 7 | 12 | 5 | 24 | 1 | 2 | 1 | 4 | 8 | 14 | 6 | 28 | 6 | 11 | 4 | 21 | 1 | 1 | 1 | 3 | 7 | 12 | 5 | 24 |
| 33 CNU-C | 306 | 341 | 347 | 994 | 118 | 157 | 114 | 389 | 424 | 498 | 461 | 1383 | 196 | 271 | 332 | 799 | 47 | 45 | 71 | 163 | 243 | 316 | 403 | 962 |
| 34 CBSUA-P | 24 | 38 | 33 | 95 | 37 | 39 | 36 | 112 | 61 | 77 | 69 | 207 | 14 | 23 | 29 | 66 | 9 | 8 | 20 | 37 | 23 | 31 | 49 | 103 |
| 35 CDD | 8 | 8 | 5 | 21 | 2 | 3 | 7 | 12 | 10 | 11 | 12 | 33 | 7 | 4 | 3 | 14 | 1 | 0 | 3 | 4 | 8 | 4 | 6 | 18 |
| 36 HAU | 28 | 41 | 33 | 102 | 23 | 31 | 35 | 89 | 51 | 72 | 68 | 191 | 17 | 29 | 32 | 78 | 6 | 10 | 15 | 31 | 23 | 39 | 47 | 109 |
| 37 MSEUF-L | 68 | 57 | 67 | 192 | 141 | 194 | 140 | 475 | 209 | 251 | 207 | 667 | 29 | 27 | 48 | 104 | 9 | 14 | 45 | 68 | 38 | 41 | 93 | 172 |
| 38 PSU-B | 125 | 123 | 148 | 396 | 230 | 251 | 192 | 673 | 355 | 374 | 340 | 1069 | 70 | 79 | 136 | 285 | 24 | 26 | 74 | 124 | 94 | 105 | 210 | 409 |
| 39 SPU-T | 27 | 17 | 10 | 54 | 91 | 112 | 65 | 268 | 118 | 129 | 75 | 322 | 11 | 6 | 6 | 23 | 7 | 9 | 34 | 50 | 18 | 15 | 40 | 73 |
| 40 USA-I | 53 | 52 | 54 | 159 | 59 | 58 | 56 | 173 | 112 | 110 | 110 | 332 | 23 | 28 | 47 | 98 | 9 | 9 | 39 | 57 | 32 | 37 | 86 | 155 |
| 41 WMSU-Z | 411 | 358 | 298 | 1067 | 968 | 751 | 566 | 2285 | 1379 | 1109 | 864 | 3352 | 144 | 137 | 229 | 510 | 169 | 83 | 219 | 471 | 313 | 220 | 448 | 981 |
| 42 XU-CDO | 111 | 98 | 105 | 314 | 13 | 26 | 14 | 53 | 124 | 124 | 119 | 367 | 94 | 82 | 100 | 276 | 3 | 7 | 12 | 22 | 97 | 89 | 112 | 298 |
| Subtotal | 1168 | 1145 | 1105 | 3418 | 1683 | 1624 | 1226 | 4533 | 2851 | 2769 | 2331 | 7951 | 611 | 697 | 966 | 2274 | 285 | 212 | 533 | 1030 | 896 | 909 | 1499 | 3304 |
| TOTAL | 3873 | 3723 | 3675 | 11271 | 3989 | 4267 | 3539 | 11795 | 7862 | 7990 | 7214 | 23066 | 2216 | 2499 | 3257 | 7972 | 529 | 612 | 1548 | 2689 | 2745 | 3111 | 4805 | 10661 |

Appendix C

Annual LET Performance of the COEs/CODs in the LET-Elementary from 2010-2012

| <div>Centers of Excellence</div> | First-timers | | | | | Repeaters | | | | | Overall | | | | |
|------------------------------------|--------------|------|------|-------|------|-----------|------|------|-------|------|---------|-------|-------|-------|------|
| | 2010 | 2011 | 2012 | Total | Rank | 2010 | 2011 | 2012 | Total | Rank | 2010 | 2011 | 2012 | Total | Rank |
| 1 Angeles Univ Foundation | 56.7 | 60.0 | 96.2 | 71.05 | 24 | 25.0 | 15.0 | 51.9 | 33.33 | 14 | 45.65 | 37.50 | 73.58 | 53.96 | 19 |
| 2 Ateneo De Naga Univ–Naga City | 80.0 | 64.7 | 97.0 | 84.00 | 10 | 0.0 | 12.5 | 77.8 | 32.00 | 18 | 60.61 | 48.00 | 92.86 | 71.00 | 8 |
| 3 Bicol Univ–Legazpi City | 51.9 | 60.8 | 89.3 | 68.25 | 27 | 22.2 | 20.0 | 56.2 | 31.51 | 19 | 36.97 | 40.97 | 75.06 | 50.87 | 23 |
| 4 Capitol Univ–Cagayan de Oro City | 61.5 | 41.7 | 94.3 | 63.54 | 31 | 7.8 | 6.4 | 25.9 | 14.10 | 39 | 18.75 | 24.21 | 51.61 | 32.94 | 35 |
| 5 Central Luzon State Univ | 72.4 | 71.6 | 87.4 | 76.81 | 16 | 9.2 | 15.9 | 59.7 | 28.36 | 21 | 45.39 | 49.12 | 75.32 | 56.39 | 16 |

| Analysis of the LET Performance of Centers of Excellence and Centers of Development for Teacher Education: Implications to Policy, Practice and Research | | | | | | | | | | | | | | | | |
|---|--|------|------|-------|-------|----|-------|-------|------|--------|----|-------|-------|--------|-------|----|
| 6 | Centro Escolar Univ–Manila | 68.8 | 65.0 | 94.4 | 75.93 | 19 | 37.5 | 0.0 | 40.0 | 25.00 | 25 | 58.33 | 48.15 | 82.61 | 62.16 | 14 |
| 7 | De La Salle Univ–Cavite | 52.2 | 55.6 | 75.0 | 58.49 | 36 | 5.9 | 10.3 | 42.9 | 19.40 | 31 | 32.50 | 27.66 | 54.55 | 36.67 | 33 |
| 8 | De La Salle Univ–Manila | 95.1 | 96.4 | 100.0 | 97.18 | 2 | 100.0 | 100.0 | | 100.00 | 1 | 95.24 | 96.43 | 100.00 | 97.22 | 1 |
| 9 | Don Mariano Marcos Memorial State Univ–Agoo | 41.5 | 45.3 | 72.5 | 53.26 | 39 | 15.7 | 19.5 | 50.5 | 28.20 | 22 | 30.38 | 31.60 | 62.50 | 41.40 | 30 |
| 10 | Father Saturnino Urios Univ–Butuan City | 40.0 | 88.9 | 92.1 | 79.03 | 13 | 6.9 | 7.1 | 26.2 | 12.18 | 41 | 13.70 | 18.46 | 57.50 | 31.19 | 37 |
| 11 | Leyte Normal Univ–Tacloban City | 44.0 | 51.5 | 76.0 | 56.37 | 37 | 2.1 | 11.4 | 41.2 | 16.97 | 37 | 16.04 | 23.23 | 52.77 | 29.55 | 38 |
| 12 | Mariano Marcos State Univ–Laoag City | 81.7 | 66.7 | 96.1 | 82.00 | 11 | 28.3 | 31.9 | 69.4 | 44.07 | 7 | 66.87 | 55.07 | 88.37 | 70.58 | 9 |
| 13 | Mindanao State Univ–Iligan Institute of Technology | 35.2 | 82.9 | 98.8 | 62.26 | 33 | 37.5 | 10.2 | 29.1 | 18.54 | 33 | 35.26 | 42.41 | 71.01 | 48.19 | 26 |
| 14 | Notre Dame of Marbel Univ–Koronadal City | 65.5 | 71.2 | 94.4 | 74.66 | 20 | 24.0 | 17.1 | 55.4 | 31.25 | 20 | 46.30 | 40.16 | 70.65 | 50.93 | 22 |
| 15 | Palawan State Univ–Puerto Princesa | 44.0 | 73.5 | 89.2 | 66.75 | 28 | 5.5 | 12.0 | 42.6 | 26.98 | 24 | 33.16 | 54.36 | 60.58 | 50.44 | 24 |
| 16 | Philippine Normal Univ–Manila | 82.2 | 93.1 | 98.7 | 92.30 | 3 | 52.4 | 25.5 | 67.4 | 47.06 | 6 | 76.30 | 79.53 | 93.95 | 84.05 | 4 |
| 17 | Saint Louis College–San Fernando, La Union | 72.7 | 55.6 | 85.7 | 73.53 | 21 | 22.2 | 14.3 | 80.0 | 33.33 | 14 | 41.38 | 30.43 | 83.33 | 51.32 | 21 |
| 18 | Saint Louis Univ | 76.8 | 86.2 | 91.3 | 84.06 | 9 | 61.5 | 43.5 | 71.4 | 56.00 | 4 | 75.00 | 77.27 | 87.95 | 79.40 | 7 |
| 19 | Silliman Univ–Dumaguete City | 70.0 | 56.3 | 100.0 | 78.72 | 14 | 0.0 | 42.9 | 36.4 | 36.84 | 11 | 63.64 | 52.17 | 78.13 | 66.67 | 12 |
| 20 | St. Mary's University, Bayombong | 88.2 | 92.9 | 92.3 | 91.55 | 4 | 14.3 | 12.5 | 36.4 | 19.51 | 30 | 54.84 | 63.64 | 75.68 | 65.18 | 13 |
| 21 | Univ of Batangas | 50.0 | 50.0 | 82.6 | 59.49 | 35 | 3.6 | 10.3 | 41.9 | 20.30 | 28 | 16.88 | 23.53 | 51.55 | 31.52 | 36 |
| 22 | Univ of Luzon, Dagupan City | 60.7 | 33.3 | 57.7 | 48.89 | 40 | 2.0 | 6.3 | 15.9 | 8.54 | 42 | 22.78 | 14.78 | 27.37 | 21.11 | 42 |

Appendix C. continued

| First-timers | | | | | | Repeaters | | | | | Overall | | | | |
|--|------|------|-------|--------------|------|-----------|------|-------|--------------|------|---------|-------|-------|--------------|------|
| <i>Centers of Excellence</i> | 2010 | 2011 | 2012 | Total | Rank | 2010 | 2011 | 2012 | Total | Rank | 2010 | 2011 | 2012 | Total | Rank |
| 23 Univ of Mindanao, Matina, Davao City | 60.3 | 64.2 | 81.4 | 69.62 | 25 | 4.4 | 5.0 | 28.2 | 12.76 | 40 | 25.27 | 29.06 | 50.88 | 35.71 | 34 |
| 24 Univ of San Carlos–Cebu City | 74.0 | 68.8 | 93.8 | 77.83 | 15 | 23.5 | 19.2 | 68.8 | 41.33 | 10 | 64.89 | 56.60 | 85.42 | 68.58 | 11 |
| 25 Univ of San Jose Recoletos–Cebu City | 60.0 | 69.1 | 85.7 | 72.05 | 22 | 14.0 | 7.4 | 41.0 | 19.53 | 29 | 30.88 | 34.96 | 62.39 | 42.02 | 29 |
| 26 Univ of Santo Tomas–Manila | 91.5 | 98.9 | 99.3 | 97.31 | 1 | 66.7 | 50.0 | 0.0 | 50.00 | 5 | 89.61 | 95.70 | 97.87 | 95.18 | 2 |
| 27 Univ of Southeastern Philippines–Davao City | 38.5 | 74.5 | 85.7 | 62.54 | 32 | 14.3 | 23.6 | 35.1 | 23.62 | 26 | 26.74 | 45.25 | 59.36 | 42.17 | 28 |
| 28 Univ of the Cordilleras | 61.5 | 67.5 | 94.4 | 76.69 | 17 | 18.8 | 14.3 | 55.2 | 28.13 | 23 | 42.25 | 42.67 | 80.72 | 56.33 | 17 |
| 29 Univ of the Immaculate Conception–Davao City | 50.0 | 80.0 | 71.4 | 63.64 | 30 | 0.0 | 25.0 | 37.5 | 18.52 | 34 | 23.81 | 46.15 | 53.33 | 38.78 | 31 |
| 30 Universidad De Santa Isabel, Naga City | 62.5 | 91.7 | 100.0 | 88.24 | 5 | 21.4 | 0.0 | 27.3 | 17.14 | 36 | 36.36 | 50.00 | 68.00 | 52.17 | 20 |
| 31 West Visayas State Univ–Iloilo City | 74.5 | 92.2 | 100.0 | 86.16 | 8 | 50.0 | 56.3 | 87.1 | 61.59 | 3 | 72.12 | 83.39 | 98.18 | 82.31 | 5 |
| <i>Centers of Development</i> | | | | | | | | | | | | | | | |
| 32 Ateneo De Davao Univ–Davao City | 85.7 | 91.7 | 80.0 | 87.50 | 7 | 100.0 | 50.0 | 100.0 | 75.00 | 2 | 87.50 | 85.71 | 83.33 | 85.71 | 3 |
| 33 Cebu Normal Univ–Cebu City | 64.1 | 79.5 | 95.7 | 80.38 | 12 | 39.8 | 28.7 | 62.3 | 41.90 | 8 | 57.31 | 63.45 | 87.42 | 69.56 | 10 |
| 34 Central Bicol State Univ of Agriculture–Pili | 58.3 | 60.5 | 87.9 | 69.47 | 26 | 24.3 | 20.5 | 55.6 | 33.04 | 16 | 37.70 | 40.26 | 71.01 | 49.76 | 25 |
| 35 Colegio de Dagupan | 87.5 | 50.0 | 60.0 | 66.67 | 29 | 50.0 | 0.0 | 42.9 | 33.33 | 14 | 80.00 | 36.36 | 50.00 | 54.55 | 18 |
| 36 Holy Angel Univ | 60.7 | 70.7 | 97.0 | 76.47 | 18 | 26.1 | 32.3 | 42.9 | 34.83 | 12 | 45.10 | 54.17 | 69.12 | 57.07 | 15 |
| 37 Manuel S. Enverga University Foundation–Lucena City | 42.6 | 47.4 | 71.6 | 54.17 | 38 | 6.4 | 7.2 | 32.1 | 14.32 | 38 | 18.18 | 16.33 | 44.93 | 25.79 | 40 |
| 38 Pangasinan State Univ–Bayambang | 56.0 | 64.2 | 91.9 | 71.97 | 23 | 10.4 | 10.4 | 38.5 | 18.42 | 35 | 26.48 | 28.07 | 61.76 | 38.26 | 32 |
| 39 St. Paul Univ–Tuguegarao | 40.7 | 35.3 | 60.0 | 42.59 | 42 | 7.7 | 8.0 | 52.3 | 18.66 | 32 | 15.25 | 11.63 | 53.33 | 22.67 | 41 |
| 40 Univ of San Agustin, Iloilo City | 43.4 | 53.8 | 87.0 | 61.64 | 34 | 15.3 | 15.5 | 69.6 | 32.95 | 17 | 28.57 | 33.64 | 78.18 | 46.69 | 27 |
| 41 Western Mindanao State Univ–Zamboanga City | 35.0 | 38.3 | 76.8 | 47.80 | 41 | 17.5 | 11.1 | 38.7 | 20.61 | 27 | 22.70 | 19.84 | 51.85 | 29.27 | 39 |
| 42 Xavier Univ–Cagayan de Oro City | 84.7 | 83.7 | 95.2 | 87.90 | 6 | 23.1 | 26.9 | 85.7 | 41.51 | 9 | 78.23 | 71.77 | 94.12 | 81.20 | 6 |
| TOTAL | 57.2 | 67.1 | 88.6 | 70.73 | | 13.3 | 14.3 | 43.7 | 22.80 | | 34.91 | 38.94 | 66.61 | 46.22 | |
| NATIONAL | 35.9 | 43.3 | 70.8 | 51.17 | | 8.2 | 8.3 | 33.7 | 17.26 | | 17.67 | 19.74 | 46.62 | 28.75 | |

| Appendix D | | | | | | | | | | | | | | | | | | | | | | | | | |
|--|--------------|------|------|-------|-----------|------|------|-------|---------|------|------|-------|--------------|------|------|-------|-----------|------|------|-------|---------|------|------|-------|--|
| Number of Takers and Passers in LET-Secondary from 2010-2012 | | | | | | | | | | | | | | | | | | | | | | | | | |
| Takers | | | | | | | | | | | | | Passers | | | | | | | | | | | | |
| Centers of Excellence | First-timers | | | | Repeaters | | | | Overall | | | | First-timers | | | | Repeaters | | | | Overall | | | | |
| | 2010 | 2011 | 2012 | Total | 2010 | 2011 | 2012 | Total | 2010 | 2011 | 2012 | Total | 2010 | 2011 | 2012 | Total | 2010 | 2011 | 2012 | Total | 2010 | 2011 | 2012 | Total | |
| 1 AUF | 38 | 42 | 26 | 106 | 11 | 14 | 19 | 44 | 49 | 56 | 45 | 150 | 27 | 33 | 22 | 82 | 4 | 5 | 3 | 12 | 31 | 38 | 25 | 94 | |
| 2 ADNU | 47 | 60 | 79 | 186 | 27 | 26 | 17 | 70 | 74 | 86 | 96 | 256 | 34 | 50 | 71 | 155 | 2 | 6 | 10 | 18 | 36 | 56 | 81 | 173 | |
| 3 BU-L | 324 | 359 | 380 | 1063 | 228 | 280 | 254 | 762 | 552 | 639 | 634 | 1825 | 184 | 206 | 263 | 653 | 40 | 64 | 66 | 170 | 224 | 270 | 329 | 823 | |
| 4 CU-CDO | 17 | 20 | 18 | 55 | 25 | 27 | 43 | 95 | 42 | 47 | 61 | 150 | 11 | 9 | 13 | 33 | 1 | 2 | 6 | 9 | 12 | 11 | 19 | 42 | |
| 5 CLSU | 145 | 154 | 191 | 490 | 157 | 188 | 190 | 535 | 302 | 342 | 381 | 1025 | 60 | 74 | 126 | 260 | 9 | 35 | 50 | 94 | 69 | 109 | 176 | 354 | |
| 6 CEU-M | 57 | 51 | 67 | 175 | 40 | 27 | 32 | 99 | 97 | 78 | 99 | 274 | 33 | 37 | 48 | 118 | 6 | 4 | 9 | 19 | 39 | 41 | 57 | 137 | |
| 7 DLSU-C | 87 | 82 | 74 | 243 | 49 | 46 | 59 | 154 | 136 | 128 | 133 | 397 | 69 | 62 | 61 | 192 | 9 | 8 | 18 | 35 | 78 | 70 | 79 | 227 | |
| 8 DLSU-M | 62 | 52 | 39 | 153 | 3 | 1 | 2 | 6 | 65 | 53 | 41 | 159 | 62 | 51 | 39 | 152 | 3 | - | 2 | 5 | 65 | 51 | 41 | 157 | |
| 9 DMMMSU-SLC-A | 121 | 108 | 139 | 368 | 106 | 106 | 90 | 302 | 227 | 214 | 229 | 670 | 65 | 60 | 93 | 218 | 11 | 24 | 29 | 64 | 76 | 84 | 122 | 282 | |
| 10 FSUU-B | 21 | 13 | 22 | 56 | 58 | 55 | 46 | 159 | 79 | 68 | 68 | 215 | 9 | 8 | 13 | 30 | 5 | 6 | 8 | 19 | 14 | 14 | 21 | 49 | |
| 11 LNU-T | 132 | 146 | 189 | 467 | 237 | 234 | 218 | 689 | 369 | 380 | 407 | 1156 | 89 | 105 | 152 | 346 | 22 | 37 | 47 | 106 | 111 | 142 | 199 | 452 | |
| 12 MMSU-L | 100 | 99 | 112 | 311 | 33 | 69 | 53 | 155 | 133 | 168 | 165 | 466 | 49 | 66 | 94 | 209 | 5 | 23 | 16 | 44 | 54 | 89 | 110 | 253 | |

| | | | | | | | | | | | | | | | | | | | | | | | | |
|------------|-----|-----|-----|------|-----|-----|-----|-----|-----|-----|-----|------|-----|-----|-----|------|----|----|----|-----|-----|-----|-----|------|
| 13 MSU-IIT | 238 | 260 | 284 | 782 | 103 | 149 | 138 | 390 | 341 | 409 | 422 | 1172 | 144 | 187 | 218 | 549 | 30 | 48 | 60 | 138 | 174 | 235 | 278 | 687 |
| 14 NDMU-K | 94 | 76 | 101 | 271 | 105 | 117 | 125 | 347 | 199 | 193 | 226 | 618 | 57 | 53 | 68 | 178 | 25 | 20 | 18 | 63 | 82 | 73 | 86 | 241 |
| 15 PSU-PP | 90 | 100 | 104 | 294 | 44 | 71 | 102 | 217 | 134 | 171 | 206 | 511 | 63 | 80 | 80 | 223 | 4 | 14 | 28 | 46 | 67 | 94 | 108 | 269 |
| 16 PNU-M | 741 | 789 | 750 | 2280 | 98 | 110 | 102 | 310 | 839 | 899 | 852 | 2590 | 666 | 725 | 719 | 2110 | 33 | 50 | 54 | 137 | 699 | 775 | 773 | 2247 |
| 17 SLC-SF | 30 | 29 | 38 | 97 | 27 | 19 | 23 | 69 | 57 | 48 | 61 | 166 | 26 | 18 | 26 | 70 | 7 | 5 | 8 | 20 | 33 | 23 | 34 | 90 |
| 18 SLU | 202 | 191 | 208 | 601 | 35 | 50 | 47 | 132 | 237 | 241 | 255 | 733 | 155 | 150 | 193 | 498 | 13 | 21 | 23 | 57 | 168 | 171 | 216 | 555 |
| 19 SU-D | 38 | 32 | 38 | 108 | 17 | 17 | 23 | 57 | 55 | 49 | 61 | 165 | 26 | 24 | 35 | 85 | 5 | 5 | 6 | 16 | 31 | 29 | 41 | 101 |
| 20 SMU-B | 76 | 47 | 53 | 176 | 40 | 41 | 39 | 120 | 116 | 88 | 92 | 296 | 48 | 36 | 44 | 128 | 4 | 14 | 11 | 29 | 52 | 50 | 55 | 157 |

Appendix D. continued

| <i>Centers of Excellence</i> | Takers | | | | | | | | | | | | Passers | | | | | | | | | | | |
|-------------------------------|--------------|------|------|-------|-----------|------|------|-------|---------|------|------|-------|--------------|------|------|-------|-----------|------|------|-------|---------|------|------|-------|
| | First-timers | | | | Repeaters | | | | Overall | | | | First-timers | | | | Repeaters | | | | Overall | | | |
| | 2010 | 2011 | 2012 | Total | 2010 | 2011 | 2012 | Total | 2010 | 2011 | 2012 | Total | 2010 | 2011 | 2012 | Total | 2010 | 2011 | 2012 | Total | 2010 | 2011 | 2012 | Total |
| 21 UB | 40 | 36 | 40 | 116 | 62 | 55 | 53 | 170 | 102 | 91 | 93 | 286 | 28 | 19 | 30 | 77 | 6 | 15 | 6 | 27 | 34 | 34 | 36 | 104 |
| 22 UL-D | 36 | 41 | 50 | 127 | 41 | 51 | 58 | 150 | 77 | 92 | 108 | 277 | 18 | 18 | 28 | 64 | 5 | 6 | 8 | 19 | 23 | 24 | 36 | 83 |
| 23 UM-D | 131 | 108 | 163 | 402 | 144 | 157 | 137 | 438 | 275 | 265 | 300 | 840 | 73 | 70 | 116 | 259 | 12 | 14 | 22 | 48 | 85 | 84 | 138 | 307 |
| 24 USC-C | 119 | 116 | 104 | 339 | 31 | 31 | 37 | 99 | 150 | 147 | 141 | 438 | 95 | 101 | 91 | 287 | 7 | 10 | 10 | 27 | 102 | 111 | 101 | 314 |
| 25 USJR-C | 94 | 101 | 79 | 274 | 80 | 77 | 81 | 238 | 174 | 178 | 160 | 512 | 52 | 55 | 51 | 158 | 9 | 12 | 26 | 47 | 61 | 67 | 77 | 205 |
| 26 UST | 224 | 274 | 183 | 681 | 19 | 29 | 21 | 69 | 243 | 303 | 204 | 750 | 188 | 247 | 182 | 617 | 11 | 15 | 11 | 37 | 199 | 262 | 193 | 654 |
| 27 USEP-D | 198 | 161 | 273 | 632 | 143 | 168 | 137 | 448 | 341 | 329 | 410 | 1080 | 120 | 121 | 210 | 451 | 32 | 53 | 54 | 139 | 152 | 174 | 264 | 590 |
| 28 UC | 159 | 167 | 174 | 500 | 65 | 100 | 74 | 239 | 224 | 267 | 248 | 739 | 103 | 109 | 134 | 346 | 8 | 16 | 22 | 46 | 111 | 125 | 156 | 392 |
| 29 UIC-D | 23 | 18 | 37 | 78 | 21 | 24 | 15 | 60 | 44 | 42 | 52 | 138 | 13 | 13 | 29 | 55 | 2 | 4 | 2 | 8 | 15 | 17 | 31 | 63 |
| 30 UDSI-N | 18 | 24 | 36 | 78 | 38 | 30 | 35 | 103 | 56 | 54 | 71 | 181 | 10 | 14 | 29 | 53 | 10 | 1 | 11 | 22 | 20 | 15 | 40 | 75 |
| 31 WVSU-I | 223 | 200 | 232 | 655 | 121 | 125 | 123 | 369 | 344 | 325 | 355 | 1024 | 154 | 146 | 193 | 493 | 28 | 42 | 47 | 117 | 182 | 188 | 240 | 610 |
| Subtotal | 3925 | 3956 | 4283 | 12164 | 2208 | 2494 | 2393 | 7095 | 6133 | 6450 | 6676 | 19259 | 2731 | 2947 | 3471 | 9149 | 368 | 579 | 691 | 1638 | 3099 | 3526 | 4162 | 10787 |
| <i>Centers of Development</i> | | | | | | | | | | | | | | | | | | | | | | | | |
| 32 ADDU | 17 | 21 | 24 | 62 | 4 | 1 | 1 | 6 | 21 | 22 | 25 | 68 | 16 | 21 | 20 | 57 | 0 | 0 | 0 | 0 | 16 | 21 | 20 | 57 |
| 33 CNU-C | 411 | 441 | 520 | 1372 | 192 | 205 | 186 | 583 | 603 | 646 | 706 | 1955 | 278 | 323 | 425 | 1026 | 42 | 65 | 50 | 157 | 320 | 388 | 475 | 1183 |
| 34 CBSUA-P | 61 | 83 | 90 | 234 | 87 | 129 | 123 | 339 | 148 | 212 | 213 | 573 | 20 | 52 | 52 | 124 | 5 | 17 | 24 | 46 | 25 | 69 | 76 | 170 |
| 35 CDD | 20 | 26 | 29 | 75 | 4 | 7 | 9 | 20 | 24 | 33 | 38 | 95 | 9 | 15 | 20 | 44 | 2 | 2 | 1 | 5 | 11 | 17 | 21 | 49 |
| 36 HAU | 58 | 49 | 59 | 166 | 35 | 39 | 51 | 125 | 93 | 88 | 110 | 291 | 33 | 36 | 45 | 114 | 5 | 12 | 18 | 35 | 38 | 48 | 63 | 149 |
| 37 MSEUF-L | 37 | 66 | 45 | 148 | 99 | 60 | 78 | 237 | 136 | 126 | 123 | 385 | 27 | 41 | 33 | 101 | 6 | 8 | 8 | 22 | 33 | 49 | 41 | 123 |
| 38 PSU-B | 96 | 98 | 140 | 334 | 86 | 89 | 85 | 260 | 182 | 187 | 225 | 594 | 65 | 80 | 119 | 264 | 13 | 23 | 28 | 64 | 78 | 103 | 147 | 328 |
| 39 SPU-T | 47 | 61 | 33 | 141 | 76 | 74 | 65 | 215 | 123 | 135 | 98 | 356 | 25 | 38 | 24 | 87 | 8 | 8 | 14 | 30 | 33 | 46 | 38 | 117 |
| 40 USA-I | 47 | 48 | 67 | 162 | 59 | 59 | 49 | 167 | 106 | 107 | 116 | 329 | 24 | 30 | 47 | 101 | 9 | 12 | 13 | 34 | 33 | 42 | 60 | 135 |
| 41 WMSU-Z | 275 | 276 | 318 | 869 | 457 | 479 | 442 | 1378 | 732 | 755 | 760 | 2,247 | 100 | 120 | 188 | 408 | 59 | 59 | 83 | 201 | 159 | 179 | 271 | 609 |
| 42 XU-CDO | 67 | 85 | 86 | 238 | 15 | 18 | 9 | 42 | 82 | 103 | 95 | 280 | 52 | 76 | 79 | 207 | 5 | 13 | 7 | 25 | 57 | 89 | 86 | 232 |
| Subtotal | 1136 | 1254 | 1411 | 3801 | 1114 | 1160 | 1098 | 3372 | 2250 | 2414 | 2509 | 7173 | 649 | 832 | 1052 | 2,533 | 154 | 219 | 246 | 619 | 803 | 1051 | 1298 | 3152 |
| TOTAL | 5061 | 5210 | 5694 | 15965 | 3322 | 3654 | 3491 | 10467 | 8383 | 8864 | 9185 | 26432 | 3380 | 3779 | 4523 | 11682 | 522 | 798 | 937 | 2257 | 3902 | 4577 | 5460 | 13939 |

Appendix E

LET Performance of the COEs/CODs in the LET-Secondary from 2010-2012

| <i>Centers of Excellence</i> | First-timers | | | | | Repeaters | | | | | Overall | | | | |
|---|--------------|-------|-------|-------|------|-----------|-------|------|-------|------|---------|--------|--------|--------|------|
| | 2010 | 2011 | 2012 | Total | Rank | 2010 | 2011 | 2012 | Total | Rank | 2010 | 2011 | 2012 | Total | Rank |
| 1 Angeles Univ Foundation | 71.1 | 84.6 | 96.2 | 82.22 | 12 | 36.4 | 15.8 | 51.9 | 36.84 | 12 | 63.27 | 55.56 | 73.58 | 64.63 | 13 |
| 2 Ateneo De Naga Univ–Naga City | 72.3 | 89.9 | 97.0 | 86.16 | 6 | 12.5 | 58.8 | 77.8 | 45.24 | 6 | 57.14 | 84.38 | 92.86 | 77.61 | 7 |
| 3 Bicol Univ–Legazpi City | 56.8 | 69.2 | 89.3 | 69.72 | 30 | 17.5 | 26.0 | 56.2 | 30.88 | 21 | 40.58 | 51.89 | 75.06 | 53.70 | 24 |
| 4 Capitol Univ–Cagayan de Oro City | 64.7 | 72.2 | 94.3 | 81.43 | 13 | 4.0 | 14.0 | 25.9 | 17.46 | 37 | 28.57 | 31.15 | 51.61 | 40.31 | 36 |
| 5 Central Luzon State Univ | 41.4 | 66.0 | 87.4 | 61.94 | 37 | 5.7 | 26.3 | 59.7 | 23.91 | 31 | 22.85 | 46.19 | 75.32 | 43.13 | 33 |
| 6 Centro Escolar Univ–Manila | 57.9 | 71.6 | 94.4 | 69.01 | 31 | 15.0 | 28.1 | 40.0 | 22.08 | 33 | 40.21 | 57.58 | 82.61 | 52.51 | 25 |
| 7 De La Salle Univ–Cavite | 79.3 | 82.4 | 75.0 | 80.35 | 15 | 18.4 | 30.5 | 42.9 | 27.91 | 25 | 57.35 | 59.40 | 54.55 | 57.95 | 18 |
| 8 De La Salle Univ–Manila | 100.0 | 100.0 | 100.0 | 100.0 | 1 | 100.0 | 100.0 | | 100.0 | 1 | 100.00 | 100.00 | 100.00 | 100.00 | 1 |
| 9 Don Mariano Marcos Memorial State Univ–Agoo | 53.7 | 66.9 | 72.5 | 64.71 | 36 | 10.4 | 32.2 | 50.5 | 31.15 | 20 | 33.48 | 53.28 | 62.50 | 50.00 | 27 |
| 10 Father Saturnino Urios Univ–Butuan City | 42.9 | 59.1 | 92.1 | 70.37 | 27 | 8.6 | 17.4 | 26.2 | 16.44 | 40 | 17.72 | 30.88 | 57.50 | 35.68 | 40 |
| 11 Leyte Normal Univ–Tacloban City | 67.4 | 80.4 | 76.0 | 75.61 | 19 | 9.3 | 21.6 | 41.2 | 32.04 | 16 | 30.08 | 48.89 | 52.77 | 47.85 | 29 |
| 12 Mariano Marcos State Univ–Laoag City | 49.0 | 83.9 | 96.1 | 79.45 | 16 | 15.2 | 30.2 | 69.4 | 43.24 | 7 | 40.60 | 66.67 | 88.37 | 69.01 | 10 |
| 13 Mindanao State Univ–Iligan Institute of Technology | 60.5 | 76.8 | 98.8 | 73.39 | 23 | 29.1 | 43.5 | 29.1 | 35.81 | 13 | 51.03 | 65.88 | 71.01 | 61.04 | 15 |
| 14 Notre Dame of Marbel Univ–Koronadal City | 60.6 | 67.3 | 94.4 | 68.83 | 32 | 23.8 | 14.4 | 55.4 | 25.87 | 29 | 41.21 | 38.05 | 70.65 | 45.07 | 32 |
| 15 Palawan State Univ–Puerto Princesa | 70.0 | 76.9 | 89.2 | 78.75 | 17 | 9.1 | 27.5 | 42.6 | 32.31 | 15 | 50.00 | 52.43 | 60.58 | 55.25 | 20 |
| 16 Philippine Normal Univ–Manila | 89.9 | 95.9 | 98.7 | 93.70 | 2 | 33.7 | 52.9 | 67.4 | 47.74 | 5 | 83.31 | 90.73 | 93.95 | 88.03 | 3 |
| 17 Saint Louis College–San Fernando, La Union | 86.7 | 68.4 | 85.7 | 78.05 | 18 | 25.9 | 34.8 | 80.0 | 38.33 | 9 | 57.89 | 55.74 | 83.33 | 61.27 | 14 |
| 18 Saint Louis Univ | 76.7 | 92.8 | 91.3 | 85.80 | 7 | 37.1 | 48.9 | 71.4 | 47.92 | 4 | 70.89 | 84.71 | 87.95 | 79.48 | 5 |
| 19 Silliman Univ–Dumaguete City | 68.4 | 92.1 | 100.0 | 84.54 | 9 | 29.4 | 26.1 | 36.4 | 29.41 | 23 | 56.36 | 67.21 | 78.13 | 65.54 | 12 |
| 20 St. Mary's University, Bayombong | 63.2 | 83.0 | 92.3 | 74.84 | 20 | 10.0 | 28.2 | 36.4 | 21.11 | 34 | 44.83 | 59.78 | 75.68 | 55.10 | 21 |
| 21 Univ of Batangas | 70.0 | 75.0 | 82.6 | 74.76 | 21 | 9.7 | 11.3 | 41.9 | 22.75 | 32 | 33.33 | 38.71 | 51.55 | 41.10 | 35 |

| | | | | | | | | | | | | | | | |
|--------------------------------|------|------|------|-------|----|------|------|------|-------|----|-------|-------|-------|-------|----|
| 22 Univ of Luzon, Dagupan City | 50.0 | 56.0 | 57.7 | 54.46 | 42 | 12.2 | 13.8 | 15.9 | 14.29 | 42 | 29.87 | 33.33 | 27.37 | 30.36 | 42 |
|--------------------------------|------|------|------|-------|----|------|------|------|-------|----|-------|-------|-------|-------|----|

Appendix E. continued

| First-timers | | | | | | Repeaters | | | | | Overall | | | | |
|--|------|------|-------|-------|------|-----------|------|-------|-------|------|---------|-------|-------|-------|------|
| <i>Centers of Excellence</i> | 2010 | 2011 | 2012 | Total | Rank | 2010 | 2011 | 2012 | Total | Rank | 2010 | 2011 | 2012 | Total | Rank |
| 23 Univ of Mindanao, Matina, Davao City | 55.7 | 71.2 | 81.4 | 68.54 | 33 | 8.3 | 16.1 | 28.2 | 17.23 | 38 | 30.91 | 46.00 | 50.88 | 42.22 | 34 |
| 24 Univ of San Carlos–Cebu City | 79.8 | 87.5 | 93.8 | 85.71 | 8 | 22.6 | 27.0 | 68.8 | 39.00 | 8 | 68.00 | 71.63 | 85.42 | 73.64 | 8 |
| 25 Univ of San Jose Recoletos–Cebu City | 55.3 | 64.6 | 85.7 | 65.94 | 35 | 11.3 | 32.1 | 41.0 | 27.03 | 28 | 35.06 | 48.13 | 62.39 | 46.78 | 31 |
| 26 Univ of Santo Tomas–Manila | 83.9 | 99.5 | 99.3 | 93.04 | 3 | 57.9 | 52.4 | 0.0 | 52.38 | 3 | 81.89 | 94.61 | 97.87 | 90.14 | 2 |
| 27 Univ of Southeastern Philippines–Davao City | 60.6 | 76.9 | 85.7 | 72.92 | 25 | 22.4 | 39.4 | 35.1 | 31.98 | 17 | 44.57 | 64.39 | 59.36 | 56.29 | 19 |
| 28 Univ of the Cordilleras | 64.8 | 77.0 | 94.4 | 74.42 | 22 | 12.3 | 29.7 | 55.2 | 27.38 | 26 | 49.55 | 62.90 | 80.72 | 60.18 | 16 |
| 29 Univ of the Immaculate Conception–Davao City | 56.5 | 78.4 | 71.4 | 70.15 | 29 | 9.5 | 13.3 | 37.5 | 15.91 | 41 | 34.09 | 59.62 | 53.33 | 48.65 | 28 |
| 30 Universidad De Santa Isabel, Naga City | 55.6 | 63.0 | 100.0 | 67.95 | 34 | 26.3 | 31.4 | 27.3 | 28.57 | 24 | 35.71 | 49.38 | 68.00 | 47.53 | 30 |
| 31 West Visayas State Univ–Iloilo City | 69.1 | 83.2 | 100.0 | 83.23 | 11 | 23.1 | 38.2 | 87.1 | 37.09 | 11 | 52.91 | 67.61 | 98.18 | 69.42 | 9 |
| <i>Centers of Development</i> | | | | | | | | | | | | | | | |
| 32 Ateneo De Davao Univ–Davao City | 94.1 | 83.3 | 80.0 | 86.96 | 5 | 0.0 | 0.0 | 100.0 | 16.67 | 39 | 76.19 | 80.00 | 83.33 | 78.85 | 6 |
| 33 Cebu Normal Univ–Cebu City | 67.6 | 81.7 | 95.7 | 80.99 | 14 | 21.9 | 26.9 | 62.3 | 33.13 | 14 | 53.07 | 67.28 | 87.42 | 67.68 | 11 |
| 34 Central Bicol State Univ of Agriculture–Pili | 32.8 | 57.8 | 87.9 | 54.89 | 41 | 5.7 | 19.5 | 55.6 | 19.92 | 35 | 16.89 | 35.68 | 71.01 | 34.88 | 41 |
| 35 Colegio de Dagupan | 45.0 | 69.0 | 60.0 | 59.26 | 40 | 50.0 | 11.1 | 42.9 | 30.00 | 22 | 45.83 | 55.26 | 50.00 | 51.35 | 26 |
| 36 Holy Angel Univ | 56.9 | 76.3 | 97.0 | 73.33 | 24 | 14.3 | 35.3 | 42.9 | 31.40 | 19 | 40.86 | 57.27 | 69.12 | 54.61 | 22 |
| 37 Manuel S. Enverga University Foundation–Lucena City | 73.0 | 73.3 | 71.6 | 72.48 | 26 | 6.1 | 10.3 | 32.1 | 18.61 | 36 | 24.26 | 33.33 | 44.93 | 35.84 | 39 |
| 38 Pangasinan State Univ–Bayambang | 67.7 | 85.0 | 91.9 | 83.33 | 10 | 15.1 | 32.9 | 38.5 | 31.68 | 18 | 42.86 | 65.33 | 61.76 | 58.23 | 17 |
| 39 St. Paul Univ–Tuguegarao | 53.2 | 72.7 | 60.0 | 61.11 | 38 | 10.5 | 21.5 | 52.3 | 27.18 | 27 | 26.83 | 38.78 | 53.33 | 37.50 | 38 |
| 40 Univ of San Agustin, Iloilo City | 51.1 | 70.1 | 87.0 | 70.24 | 28 | 15.3 | 26.5 | 69.6 | 37.20 | 10 | 31.13 | 51.72 | 78.18 | 53.92 | 23 |
| 41 Western Mindanao State Univ–Zamboanga City | 36.4 | 68.9 | 76.8 | 61.11 | 39 | 12.9 | 18.8 | 38.7 | 24.64 | 30 | 21.72 | 37.90 | 51.85 | 37.99 | 37 |
| 42 Xavier Univ–Cagayan de Oro City | 77.6 | 91.9 | 95.2 | 89.53 | 4 | 33.3 | 77.8 | 85.7 | 63.16 | 2 | 69.51 | 90.53 | 94.12 | 86.15 | 4 |
| TOTAL | 66.8 | 79.9 | 88.6 | 77.53 | | 15.8 | 26.8 | 43.7 | 29.08 | | 46.61 | 59.67 | 66.61 | 57.27 | |
| NATIONAL | 45.2 | 60.7 | 70.8 | 59.34 | | 10.1 | 18.4 | 33.7 | 22.25 | | 24.77 | 36.51 | 46.62 | 36.91 | |

Appendix F
Comparison of LET Performance

| Performance of COEs and CODs in the LET-Elementary Level | | | | | | | | | | | | |
|--|------|------|------|-------|---------|------|------|-------|----------|------|------|-------|
| Takers | | | | | Passers | | | | % Passed | | | |
| | 2010 | 2011 | 2012 | Total | 2010 | 2011 | 2012 | Total | 2010 | 2011 | 2012 | Total |
| COEs | 5011 | 5221 | 4883 | 15115 | 1915 | 2202 | 3306 | 7423 | 38.2 | 42.2 | 67.7 | 49.1 |
| CODs | 2851 | 2769 | 2331 | 7951 | 896 | 909 | 1499 | 3304 | 31.4 | 32.8 | 64.3 | 41.6 |

| Performance of COEs and CODs in the LET-Secondary Level | | | | | | | | | | | | |
|---|------|------|------|-------|---------|------|------|-------|----------|------|------|-------|
| Takers | | | | | Passers | | | | % Passed | | | |
| | 2010 | 2011 | 2012 | Total | 2010 | 2011 | 2012 | Total | 2010 | 2011 | 2012 | Total |
| COEs | 6133 | 6450 | 6676 | 19259 | 3099 | 3526 | 4162 | 10787 | 50.5 | 54.7 | 62.3 | 56.0 |
| CODs | 2250 | 2414 | 2509 | 7173 | 803 | 1051 | 1298 | 3152 | 35.7 | 43.5 | 51.7 | 43.9 |

| Performance of SUCs and Private HEIs in the LET-Elementary Level | | | | | | | | | | | | |
|--|------|------|------|-------|---------|------|------|-------|----------|------|------|-------|
| Takers | | | | | Passers | | | | % Passed | | | |
| | 2010 | 2011 | 2012 | Total | 2010 | 2011 | 2012 | Total | 2010 | 2011 | 2012 | Total |
| SUCs | 5862 | 5719 | 5082 | 16663 | 1999 | 2201 | 3373 | 7573 | 34.1 | 38.5 | 66.4 | 45.4 |
| Private HEIs | 2000 | 2271 | 2132 | 6403 | 812 | 910 | 1432 | 3154 | 40.6 | 40.1 | 67.2 | 49.3 |

| Performance of SUCs and Private HEIs in the LET-Secondary Level | | | | | | | | | | | | |
|---|------|------|------|-------|---------|------|------|-------|----------|------|------|-------|
| Takers | | | | | Passers | | | | % Passed | | | |
| | 2010 | 2011 | 2012 | Total | 2010 | 2011 | 2012 | Total | 2010 | 2011 | 2012 | Total |
| SUCs | 5247 | 5676 | 5965 | 16888 | 2390 | 2899 | 3568 | 8857 | 45.5 | 51.1 | 59.8 | 52.4 |
| Private HEIs | 3136 | 3188 | 3220 | 9544 | 1512 | 1678 | 1892 | 5082 | 48.2 | 52.6 | 58.8 | 53.2 |

Appendix F continued

| LET Performance of COEs/CODs in the Elementary and Secondary Levels | | | | | | | | | | | | |
|---|------|------|------|-------|---------|------|------|-------|----------|------|------|-------|
| Takers | | | | | Passers | | | | % Passed | | | |
| | 2010 | 2011 | 2012 | Total | 2010 | 2011 | 2012 | Total | 2010 | 2011 | 2012 | Total |
| Elementary | 7862 | 7990 | 7214 | 23066 | 2811 | 3111 | 4805 | 10727 | 35.8 | 38.9 | 66.6 | 46.5 |
| Secondary | 8383 | 8864 | 9185 | 26432 | 3902 | 4577 | 5460 | 13939 | 46.5 | 51.6 | 59.4 | 52.7 |

| LET Performance of First-Timers and Repeaters in the Elementary Level | | | | | | | | | | | | |
|---|------|------|------|-------|---------|------|------|-------|----------|------|------|-------|
| Takers | | | | | Passers | | | | % Passed | | | |
| | 2010 | 2011 | 2012 | Total | 2010 | 2011 | 2012 | Total | 2010 | 2011 | 2012 | Total |
| First-timers | 3873 | 3723 | 3675 | 11271 | 2216 | 2499 | 3257 | 7972 | 57.2 | 67.1 | 88.6 | 70.7 |
| Repeaters | 3989 | 4267 | 3539 | 11795 | 595 | 612 | 1548 | 2755 | 14.9 | 14.3 | 43.7 | 23.4 |

| LET Performance of First-Timers and Repeaters in the Secondary Level | | | | | | | | | | | | |
|--|------|------|------|-------|---------|------|------|-------|----------|------|------|-------|
| Takers | | | | | Passers | | | | % Passed | | | |
| | 2010 | 2011 | 2012 | Total | 2010 | 2011 | 2012 | Total | 2010 | 2011 | 2012 | Total |
| First-timers | 5061 | 5210 | 5694 | 15965 | 3380 | 3779 | 4523 | 11682 | 66.8 | 72.5 | 79.4 | 73.2 |
| Repeaters | 3322 | 3654 | 3491 | 10467 | 522 | 798 | 937 | 2,257 | 15.7 | 21.8 | 26.8 | 21.6 |

| LET Performance of COEs/CODs in the Elementary Level | | | | | | | | | | | | |
|--|------|------|------|-------|---------|------|------|-------|----------|------|------|-------|
| Takers | | | | | Passers | | | | % Passed | | | |
| | 2010 | 2011 | 2012 | Total | 2010 | 2011 | 2012 | Total | 2010 | 2011 | 2012 | Total |
| Luzon | 2821 | 3248 | 3077 | 9146 | 1177 | 1422 | 2186 | 4785 | 41.7 | 43.8 | 71.0 | 52.3 |
| Visayas | 2621 | 2587 | 2283 | 7491 | 956 | 1043 | 1543 | 3542 | 36.5 | 40.3 | 67.6 | 47.3 |
| Mindanao | 2420 | 2155 | 1854 | 6429 | 678 | 646 | 1076 | 2400 | 28.0 | 30.0 | 58.0 | 37.3 |

| LET Performance of COEs/CODs in the Secondary Level | | | | | | | | | | | | |
|---|------|------|------|-------|---------|------|------|-------|----------|------|------|-------|
| Takers | | | | | Passers | | | | % Passed | | | |
| | 2010 | 2011 | 2012 | Total | 2010 | 2011 | 2012 | Total | 2010 | 2011 | 2012 | Total |
| Luzon | 4426 | 4799 | 4820 | 14045 | 2296 | 2713 | 3053 | 8062 | 51.9 | 56.5 | 63.3 | 57.4 |
| Visayas | 1801 | 1832 | 1946 | 5579 | 840 | 967 | 1193 | 3000 | 46.6 | 52.8 | 61.3 | 53.8 |
| Mindanao | 2156 | 2233 | 2419 | 6808 | 766 | 897 | 1214 | 2877 | 35.5 | 40.2 | 50.2 | 42.3 |

Appendix G

TSU LET Performance from 2010-2012

| Elementary Level | | | | | | | | | | | | | | | | | | | | | |
|------------------|----------|----------|----------|----------|----------|----------|----------|----------|----------|----------|----------|----------|----------|----------|--------------------|----------|----------|----------|----------|----------|----------|
| Takers | | | | | | | | Passers | | | | | | | Passing Percentage | | | | | | |
| | Apr 2010 | Sep 2010 | Apr 2011 | Sep 2011 | Mar 2012 | Sep 2012 | Over all | Apr 2010 | Sep 2010 | Apr 2011 | Sep 2011 | Mar 2012 | Sep 2012 | Over all | Apr 2010 | Sep 2010 | Apr 2011 | Sep 2011 | Mar 2012 | Sep 2012 | Over all |
| First-timers | 20 | 126 | 34 | 109 | 17 | 109 | 415 | 5 | 16 | 5 | 51 | 16 | 87 | 180 | 25.00 | 12.70 | 14.71 | 46.79 | 94.12 | 79.82 | 43.37 |
| Repeaters | 112 | 136 | 149 | 127 | 151 | 160 | 835 | 12 | 3 | 28 | 6 | 83 | 55 | 187 | 10.71 | 2.21 | 18.79 | 4.72 | 54.97 | 34.38 | 22.40 |
| Total | 132 | 262 | 183 | 236 | 168 | 269 | 1250 | 17 | 19 | 33 | 57 | 99 | 142 | 367 | 12.88 | 7.25 | 18.03 | 24.15 | 58.93 | 52.79 | 29.36 |

| Secondary Level | | | | | | | | | | | | | | | | | | | | | |
|-----------------|----------|----------|----------|----------|----------|----------|----------|----------|----------|----------|----------|----------|----------|----------|--------------------|----------|----------|----------|----------|----------|----------|
| Takers | | | | | | | | Passers | | | | | | | Passing Percentage | | | | | | |
| | Apr 2010 | Sep 2010 | Apr 2011 | Sep 2011 | Mar 2012 | Sep 2012 | Over all | Apr 2010 | Sep 2010 | Apr 2011 | Sep 2011 | Mar 2012 | Sep 2012 | Over all | Apr 2010 | Sep 2010 | Apr 2011 | Sep 2011 | Mar 2012 | Sep 2012 | Over all |
| First-timers | 24 | 151 | 18 | 98 | 31 | 115 | 437 | 7 | 51 | 4 | 47 | 18 | 78 | 205 | 29.17 | 33.77 | 22.22 | 47.96 | 58.06 | 67.83 | 46.91 |
| Repeaters | 75 | 74 | 104 | 113 | 111 | 136 | 613 | 11 | 1 | 17 | 13 | 28 | 30 | 100 | 14.67 | 1.35 | 16.35 | 11.50 | 25.23 | 22.06 | 16.31 |
| Total | 99 | 225 | 122 | 211 | 142 | 251 | 1050 | 18 | 52 | 21 | 60 | 46 | 108 | 305 | 18.18 | 23.11 | 17.21 | 28.44 | 32.39 | 43.03 | 29.05 |